

Datasheet for ABIN7246568

**anti-SCGN antibody**[Go to Product page](#)

## 1 Image

## Overview

Quantity:	200 µL
Target:	SCGN
Reactivity:	Human, Mouse, Rat
Host:	Rabbit
Clonality:	Polyclonal
Conjugate:	This SCGN antibody is un-conjugated
Application:	Western Blotting (WB), ELISA

## Product Details

Immunogen:	Fusion protein of human SCGN
Isotype:	IgG
Characteristics:	Polyclonal Antibody
Purification:	Antigen affinity purification

## Target Details

Target:	SCGN
Alternative Name:	SCGN ( <a href="#">SCGN Products</a> )
Background:	The encoded protein is a secreted calcium-binding protein which is found in the cytoplasm. It is related to calbindin D-28K and calretinin. This protein is thought to be involved in KCL-stimulated calcium flux and cell proliferation.

## Target Details

Molecular Weight: Observed\_MW: Refer to figures  
Calculated\_MW: 32 kDa

UniProt: [O76038](#)

## Application Details

Application Notes: WB 1:500-1:2000, ELISA 1:5000-1:10000

Restrictions: For Research Use only

## Handling

Format: Liquid

Concentration: 1.74 mg/mL

Buffer: PBS with 0.05 % Sodium azide and 40 % Glycerol, pH 7.4

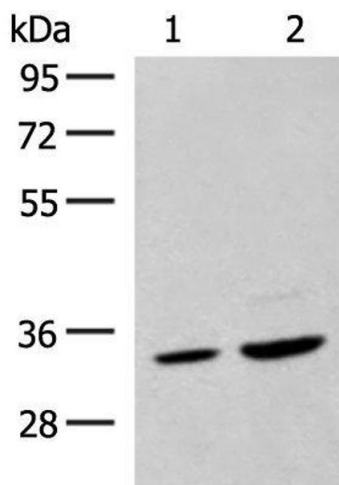
Preservative: Sodium azide

Precaution of Use: This product contains Sodium azide: a POISONOUS AND HAZARDOUS SUBSTANCE which should be handled by trained staff only.

Storage: -20 °C

Storage Comment: Store at -20°C. Avoid freeze / thaw cycles.

## Images



### Western Blotting

**Image 1.** Western blot analysis of Hela cell and Human fetal liver tissue lysates using SCGN Polyclonal Antibody at dilution of 1:600