



[Go to Product page](#)

Datasheet for ABIN7246577

## anti-GKAP1 antibody

### 2 Images

#### Overview

Quantity:	200 µL
Target:	GKAP1
Reactivity:	Human, Mouse, Rat
Host:	Rabbit
Clonality:	Polyclonal
Conjugate:	This GKAP1 antibody is un-conjugated
Application:	ELISA, Immunohistochemistry (IHC)

#### Product Details

Immunogen:	Fusion protein of human GKAP1
Isotype:	IgG
Characteristics:	Polyclonal Antibody
Purification:	Antigen affinity purification

#### Target Details

Target:	GKAP1
Alternative Name:	GKAP1 ( <a href="#">GKAP1 Products</a> )
Background:	This gene encodes a protein that is highly similar to the mouse cGMP-dependent protein kinase anchoring protein 42 kDa. The mouse protein has been found to localize with the Golgi and recruit cGMP-dependent protein kinase I alpha to the Golgi in mouse testes. It is thought to play a role in germ cell development. Transcript variants encoding different isoforms have been

## Target Details

found for this gene.

UniProt: [Q5VSY0](#)

## Application Details

Application Notes: IHC 1:90-1:450, ELISA 1:5000-1:10000

Restrictions: For Research Use only

## Handling

Format: Liquid

Concentration: 1.62 mg/mL

Buffer: PBS with 0.05 % Sodium azide and 40 % Glycerol, pH 7.4

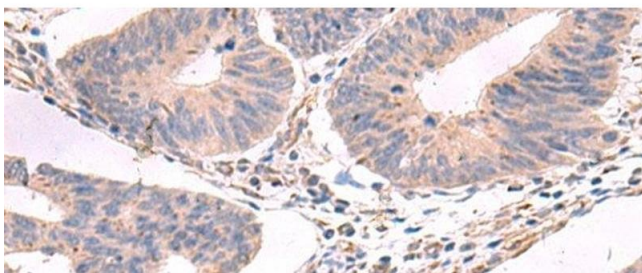
Preservative: Sodium azide

Precaution of Use: This product contains Sodium azide: a POISONOUS AND HAZARDOUS SUBSTANCE which should be handled by trained staff only.

Storage: -20 °C

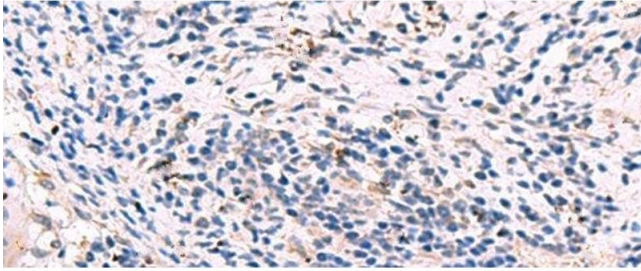
Storage Comment: Store at -20°C. Avoid freeze / thaw cycles.

## Images



### Immunohistochemistry (Paraffin-embedded Sections)

**Image 1.** Immunohistochemistry of paraffin-embedded Human colorectal cancer tissue using GKAP1 Polyclonal Antibody at dilution of 1:95(x200)



### Immunohistochemistry (Paraffin-embedded Sections)

**Image 2.** Immunohistochemistry of paraffin-embedded Human cervical cancer tissue using GKAP1 Polyclonal Antibody at dilution of 1:95(x200)