

Datasheet for ABIN7246580

**anti-Septin 1 antibody**[Go to Product page](#)**1** Image

## Overview

Quantity:	200 µL
Target:	Septin 1 (SEPT1)
Reactivity:	Human, Mouse, Rat
Host:	Rabbit
Clonality:	Polyclonal
Conjugate:	This Septin 1 antibody is un-conjugated
Application:	ELISA, Immunohistochemistry (IHC)

## Product Details

Immunogen:	Fusion protein of human SEPT1
Isotype:	IgG
Characteristics:	Polyclonal Antibody
Purification:	Antigen affinity purification

## Target Details

Target:	Septin 1 (SEPT1)
Alternative Name:	SEPT1 ( <a href="#">SEPT1 Products</a> )
Background:	This gene is a member of the septin family of GTPases. Members of this family are required for cytokinesis and the maintenance of cellular morphology. This gene encodes a protein that can form homo- and heterooligomeric filaments, and may contribute to the formation of neurofibrillary tangles in Alzheimer's disease. Alternatively spliced transcript variants have been

## Target Details

found but the full-length nature of these variants has not been determined. SEPT1 (Septin 1) is a Protein Coding gene. Among its related pathways are Aurora B signaling and Bacterial invasion of epithelial cells. GO annotations related to this gene include GTP binding and GTPase activity. An important paralog of this gene is SEPT4.

UniProt: [Q8WYJ6](#)

## Application Details

Application Notes: IHC 1:40-1:200, ELISA 1:5000-1:10000

Restrictions: For Research Use only

## Handling

Format: Liquid

Concentration: 0.84 mg/mL

Buffer: PBS with 0.05 % Sodium azide and 40 % Glycerol, pH 7.4

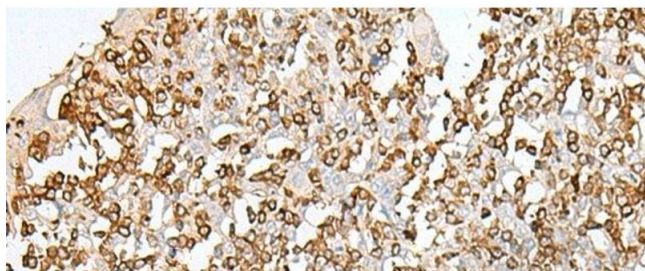
Preservative: Sodium azide

Precaution of Use: This product contains Sodium azide: a POISONOUS AND HAZARDOUS SUBSTANCE which should be handled by trained staff only.

Storage: -20 °C

Storage Comment: Store at -20°C. Avoid freeze / thaw cycles.

## Images



### Immunohistochemistry (Paraffin-embedded Sections)

**Image 1.** Immunohistochemistry of paraffin-embedded Human tonsil tissue using SEPT1 Polyclonal Antibody at dilution of 1:50(x200)