

Datasheet for ABIN7246619

anti-SCRN2 antibody

3 Images

[Go to Product page](#)

Overview

Quantity:	200 µL
Target:	SCRN2
Reactivity:	Human, Mouse, Rat
Host:	Rabbit
Clonality:	Polyclonal
Conjugate:	This SCRIN2 antibody is un-conjugated
Application:	Western Blotting (WB), Immunohistochemistry (IHC), ELISA

Product Details

Immunogen:	Fusion protein of human SCRIN2
Isotype:	IgG
Characteristics:	Polyclonal Antibody
Purification:	Antigen affinity purification

Target Details

Target:	SCRIN2
Alternative Name:	SCRIN2 (SCRIN2 Products)
Background:	The SCRIN (Secernin) gene family has three vertebrate paralogs, i.e. SCRIN1, SCRIN2 and SCRIN3, which are closely linked to human HOXA, HOXB and HOXD cluster, respectively. SCRIN2 (secernin-2) is a 425 amino acid protein that belongs to the peptidase C69 family and the Secernin subfamily. Vertebrate SCRIN genes showed a topology of the form (A)(BC), i.e. (Hsa2

Target Details

Hsa7)(Hsa17), with SCRN2 falling outside the SCRN3-SCRN1 cluster. The SCRN2 gene is conserved in dog, cow, mouse, rat and zebrafish, and maps to human chromosome 17q21.32. Chromosome 17 makes up over 2.5 % of the human genome with about 81 million bases encoding over 1,200 genes. Chromosome 17 is linked to neurofibromatosis, a condition characterized by neural and epidermal lesions, and dysregulated Schwann cell growth. Alexander disease, Birt-Hogg-Dube syndrome and Canavan disease are also associated with chromosome 17.

Molecular Weight: Observed_MW: Refer to figures
Calculated_MW: 47 kDa

UniProt: [Q96FV2](#)

Application Details

Application Notes: WB 1:500-1:2000, IHC 1:50-1:300, ELISA 1:5000-1:10000

Restrictions: For Research Use only

Handling

Format: Liquid

Concentration: 1.08 mg/mL

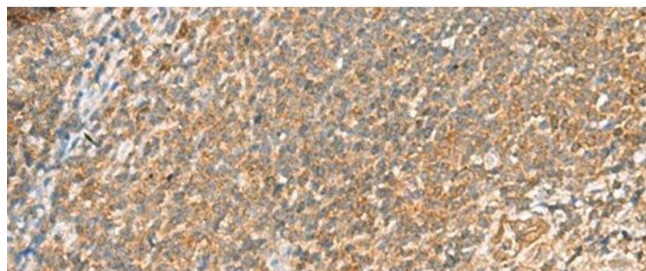
Buffer: PBS with 0.05 % Sodium azide and 40 % Glycerol, pH 7.4

Preservative: Sodium azide

Precaution of Use: This product contains Sodium azide: a POISONOUS AND HAZARDOUS SUBSTANCE which should be handled by trained staff only.

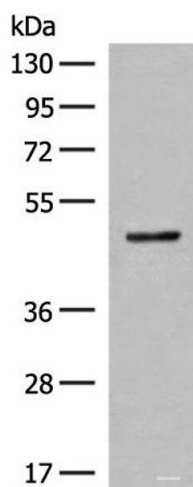
Storage: -20 °C

Storage Comment: Store at -20°C. Avoid freeze / thaw cycles.



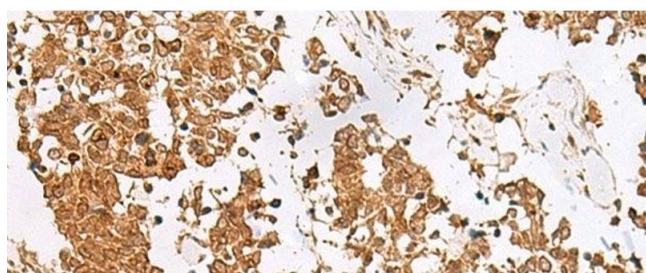
Immunohistochemistry (Paraffin-embedded Sections)

Image 1. Immunohistochemistry of paraffin-embedded Human tonsil tissue using SCR2 Polyclonal Antibody at dilution of 1:60(x200)



Western Blotting

Image 2. Western blot analysis of Mouse small intestines tissue lysate using SCR2 Polyclonal Antibody at dilution of 1:400



Immunohistochemistry (Paraffin-embedded Sections)

Image 3. Immunohistochemistry of paraffin-embedded Human lung cancer tissue using SCR2 Polyclonal Antibody at dilution of 1:60(x200)