

Datasheet for ABIN7246640
anti-EXD2 antibody



[Go to Product page](#)

3 Images

Overview

Quantity:	200 µL
Target:	EXD2
Reactivity:	Human, Mouse
Host:	Rabbit
Clonality:	Polyclonal
Application:	ELISA, Western Blotting (WB), Immunohistochemistry (IHC)

Product Details

Immunogen:	Fusion protein of human EXD2
Isotype:	IgG
Characteristics:	Polyclonal Antibody
Purification:	Antigen affinity purification

Target Details

Target:	EXD2
Alternative Name:	EXD2 (EXD2 Products)
Background:	Exonuclease required for double-strand breaks resection and efficient homologous recombination. Plays a key role in controlling the initial steps of chromosomal break repair, it is recruited to chromatin in a damage-dependent manner and functionally interacts with the MRN complex to accelerate resection through its 3'-5' exonuclease activity, which efficiently processes double-stranded DNA substrates containing nicks.

Target Details

Molecular Weight: Observed_MW: Refer to figures
Calculated_MW: 70 kDa

UniProt: [Q9NVH0](#)

Application Details

Application Notes: WB 1:500-1:2000, IHC 1:40-1:200, ELISA 1:5000-1:10000

Restrictions: For Research Use only

Handling

Format: Liquid

Concentration: 0.96 mg/mL

Buffer: PBS with 0.05 % Sodium azide and 40 % Glycerol, pH 7.4

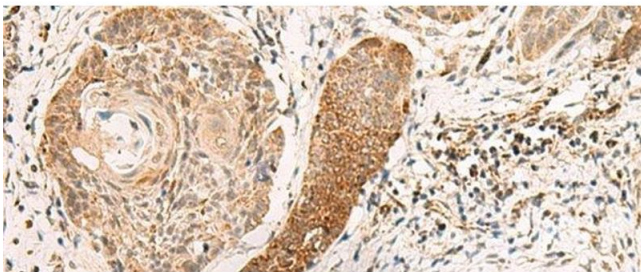
Preservative: Sodium azide

Precaution of Use: This product contains Sodium azide: a POISONOUS AND HAZARDOUS SUBSTANCE which should be handled by trained staff only.

Storage: -20 °C

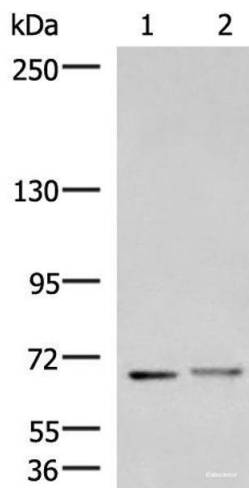
Storage Comment: Store at -20°C. Avoid freeze / thaw cycles.

Images



Immunohistochemistry (Paraffin-embedded Sections)

Image 1. Immunohistochemistry of paraffin-embedded Human esophagus cancer tissue using EXD2 Polyclonal Antibody at dilution of 1:55(x200)



Western Blotting

Image 2. Western blot analysis of Mouse brain tissue and Human cerebrum tissue lysates using EXD2 Polyclonal Antibody at dilution of 1:700

Immunohistochemistry (Paraffin-embedded Sections)

Image 3. Immunohistochemistry of paraffin-embedded Human tonsil tissue using EXD2 Polyclonal Antibody at dilution of 1:55(x200)

