

Datasheet for ABIN7246658

anti-HIRIP3 antibody**2** Images[Go to Product page](#)

Overview

Quantity:	200 µL
Target:	HIRIP3
Reactivity:	Human
Host:	Rabbit
Clonality:	Polyclonal
Conjugate:	This HIRIP3 antibody is un-conjugated
Application:	Immunohistochemistry (IHC), ELISA

Product Details

Immunogen:	Fusion protein of human HIRIP3
Isotype:	IgG
Characteristics:	Polyclonal Antibody
Purification:	Antigen affinity purification

Target Details

Target:	HIRIP3
Alternative Name:	HIRIP3 (HIRIP3 Products)
Background:	<p>The HIRA protein shares sequence similarity with Hir1p and Hir2p, the two corepressors of histone gene transcription characterized in the yeast, <i>Saccharomyces cerevisiae</i>. The structural features of the HIRA protein suggest that it may function as part of a multiprotein complex.</p> <p>Several cDNAs encoding HIRA-interacting proteins, or HIRIPs, have been identified. In vitro, the</p>

Target Details

protein encoded by this gene binds HIRA, as well as H2B and H3 core histones, indicating that a complex containing HIRA-HIRIP3 could function in some aspects of chromatin and histone metabolism. Alternatively spliced transcript variants encoding distinct isoforms have been found for this gene.

UniProt: [Q9BW71](#)

Application Details

Application Notes: IHC 1:50-1:300, ELISA 1:5000-1:10000

Restrictions: For Research Use only

Handling

Format: Liquid

Concentration: 1.08 mg/mL

Buffer: PBS with 0.05 % Sodium azide and 40 % Glycerol, pH 7.4

Preservative: Sodium azide

Precaution of Use: This product contains Sodium azide: a POISONOUS AND HAZARDOUS SUBSTANCE which should be handled by trained staff only.

Storage: -20 °C

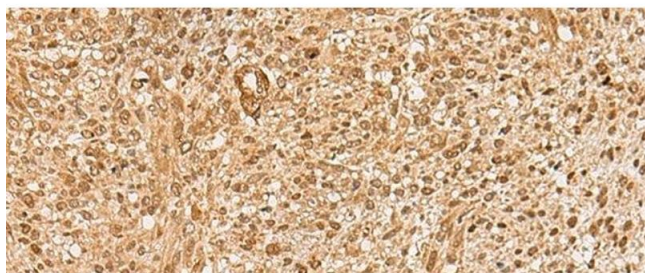
Storage Comment: Store at -20°C. Avoid freeze / thaw cycles.

Images



Immunohistochemistry (Paraffin-embedded Sections)

Image 1. Immunohistochemistry of paraffin-embedded Human tonsil tissue using HIRIP3 Polyclonal Antibody at dilution of 1:60(x200)



Immunohistochemistry (Paraffin-embedded Sections)

Image 2. Immunohistochemistry of paraffin-embedded Human liver cancer tissue using HIRIP3 Polyclonal Antibody at dilution of 1:60(x200)