

Datasheet for ABIN7246682  
**anti-CALCOCO1 antibody**

## 3 Images

[Go to Product page](#)

## Overview

Quantity:	200 µL
Target:	CALCOCO1
Reactivity:	Human, Mouse, Rat
Host:	Rabbit
Clonality:	Polyclonal
Conjugate:	This CALCOCO1 antibody is un-conjugated
Application:	Immunohistochemistry (IHC), Western Blotting (WB), ELISA

## Product Details

Immunogen:	Fusion protein of human CALCOCO1
Isotype:	IgG
Characteristics:	Polyclonal Antibody
Purification:	Antigen affinity purification

## Target Details

Target:	CALCOCO1
Alternative Name:	CALCOCO1 ( <a href="#">CALCOCO1 Products</a> )
Background:	CALCOCO1 (calcium-binding and coiled-coil domain-containing protein 1), also known as cocoa, calphoglin, sarcoma antigen NY-SAR-3 or coiled-coil coactivator protein, is a 691 amino acid protein that shuttles between the cytoplasm and nucleus and functions as coactivator for aryl hydrocarbon and nuclear receptors. A member of the CALCOCO family, CALCOCO1 is

## Target Details

forms a calphoglin complex with PPA1 and PGM 1 and contains multiple functional domains through which it acts as a component of both the androgen signaling pathway and the Wnt/ $\beta$ -catenin signaling pathway. CALCOCO1 exists as three alternatively spliced isoforms (termed Q9P1Z2-1, 2 and 3), which are encoded by genes mapping to human chromosome 12q13.13 and mouse chromosome 15 F3.

Molecular Weight: Observed\_MW: Refer to figures  
Calculated\_MW: 77 kDa

UniProt: [Q9P1Z2](#)

Pathways: [Intracellular Steroid Hormone Receptor Signaling Pathway](#), [Chromatin Binding](#)

## Application Details

Application Notes: WB 1:500-1:2000, IHC 1:40-1:200, ELISA 1:5000-1:10000

Restrictions: For Research Use only

## Handling

Format: Liquid

Concentration: 0.84 mg/mL

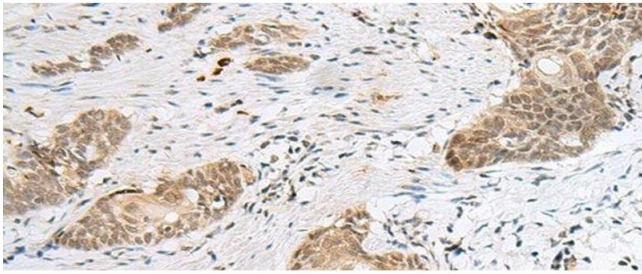
Buffer: PBS with 0.05 % Sodium azide and 40 % Glycerol, pH 7.4

Preservative: Sodium azide

Precaution of Use: This product contains Sodium azide: a POISONOUS AND HAZARDOUS SUBSTANCE which should be handled by trained staff only.

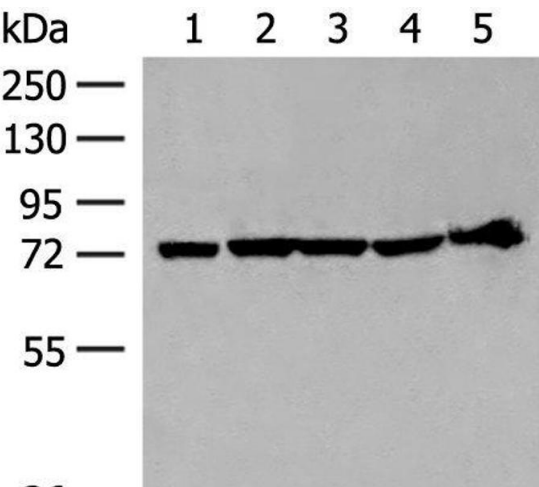
Storage: -20 °C

Storage Comment: Store at -20°C. Avoid freeze / thaw cycles.



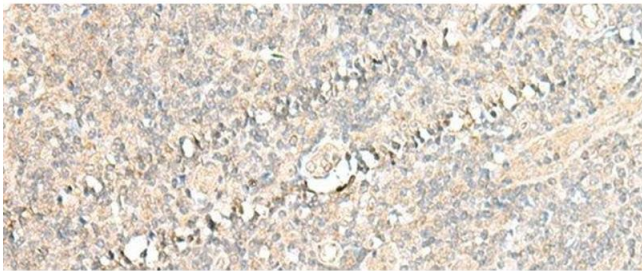
Immunohistochemistry (Paraffin-embedded Sections)

**Image 1.** Immunohistochemistry of paraffin-embedded Human esophagus cancer tissue using CALCOCO1 Polyclonal Antibody at dilution of 1:50(x200)



Western Blotting

**Image 2.** Western blot analysis of 293T cell and Mouse heart tissue lysates using CALCOCO1 Polyclonal Antibody at dilution of 1:300



Immunohistochemistry (Paraffin-embedded Sections)

**Image 3.** Immunohistochemistry of paraffin-embedded Human tonsil tissue using CALCOCO1 Polyclonal Antibody at dilution of 1:50(x200)