

Datasheet for ABIN7246688

anti-SLC26A3 antibody[Go to Product page](#)**2** Images

Overview

Quantity:	200 µL
Target:	SLC26A3
Reactivity:	Human, Mouse, Rat
Host:	Rabbit
Clonality:	Polyclonal
Conjugate:	This SLC26A3 antibody is un-conjugated
Application:	Western Blotting (WB), ELISA, Immunohistochemistry (IHC)

Product Details

Immunogen:	Fusion protein of human SLC26A3
Isotype:	IgG
Characteristics:	Polyclonal Antibody
Purification:	Antigen affinity purification

Target Details

Target:	SLC26A3
Alternative Name:	SLC26A3 (SLC26A3 Products)
Background:	The protein encoded by this gene is a transmembrane glycoprotein that transports chloride ions across the cell membrane in exchange for bicarbonate ions. It is localized to the mucosa of the lower intestinal tract, particularly to the apical membrane of columnar epithelium and some goblet cells. The protein is essential for intestinal chloride absorption, and mutations in

Target Details

this gene have been associated with congenital chloride diarrhea.SLC26A3 (Solute Carrier Family 26 Member 3) is a Protein Coding gene. Diseases associated with SLC26A3 include Diarrhea 1, Secretory Chloride, Congenital and Congenital Chloride Diarrhea. Among its related pathways are Transport of glucose and other sugars, bile salts and organic acids, metal ions and amine compounds and Pancreatic secretion. GO annotations related to this gene include transcription factor activity, sequence-specific DNA binding and transcription cofactor activity. An important paralog of this gene is SLC26A4.

Molecular Weight: Observed_MW: Refer to figures
Calculated_MW: 85 kDa

UniProt: [P40879](#)

Application Details

Application Notes: WB 1:500-1:2000, IHC 1:30-1:150, ELISA 1:5000-1:10000

Restrictions: For Research Use only

Handling

Format: Liquid

Concentration: 0.6 mg/mL

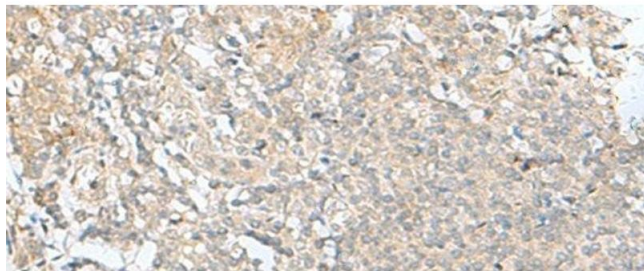
Buffer: PBS with 0.05 % Sodium azide and 40 % Glycerol, pH 7.4

Preservative: Sodium azide

Precaution of Use: This product contains Sodium azide: a POISONOUS AND HAZARDOUS SUBSTANCE which should be handled by trained staff only.

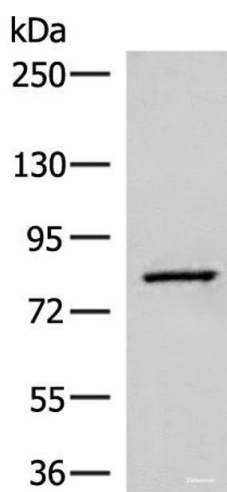
Storage: -20 °C

Storage Comment: Store at -20°C. Avoid freeze / thaw cycles.



Immunohistochemistry (Paraffin-embedded Sections)

Image 1. Immunohistochemistry of paraffin-embedded Human tonsil tissue using SLC26A3 Polyclonal Antibody at dilution of 1:35(x200)



Western Blotting

Image 2. Western blot analysis of Human hepatocellular carcinoma tissue lysate using SLC26A3 Polyclonal Antibody at dilution of 1:250