

Datasheet for ABIN7246760

**anti-IFITM2 antibody****2** Images[Go to Product page](#)

## Overview

Quantity:	200 µL
Target:	IFITM2
Reactivity:	Human
Host:	Rabbit
Clonality:	Polyclonal
Conjugate:	This IFITM2 antibody is un-conjugated
Application:	ELISA, Immunohistochemistry (IHC)

## Product Details

Immunogen:	Fusion protein of human IFITM2
Isotype:	IgG
Characteristics:	Polyclonal Antibody
Purification:	Antigen affinity purification

## Target Details

Target:	IFITM2
Alternative Name:	IFITM2 ( <a href="#">IFITM2 Products</a> )
Background:	IFITM2,also named as 1-8D,belongs to the CD225 family. It is an IFN-induced antiviral protein that mediates cellular innate immunity to at least three major human pathogens,namely influenza A H1N1 virus,West Nile virus (WNV),and dengue virus (WNV),by inhibiting the early step(s) of replication. IFITM2 induces cell cycle arrest and mediates apoptosis by caspase

## Target Details

activation and in p53-independent manner. It is overexpressed in colon carcinoma. IFITM2 is a novel pro-apoptotic gene that will provide new insights into the regulated cellular pathways to death. This antibody is specific to IFITM2.

UniProt: [Q01629](#)

## Application Details

Application Notes: IHC 1:30-1:150, ELISA 1:5000-1:10000

Restrictions: For Research Use only

## Handling

Format: Liquid

Concentration: 0.72 mg/mL

Buffer: PBS with 0.05 % Sodium azide and 40 % Glycerol, pH 7.4

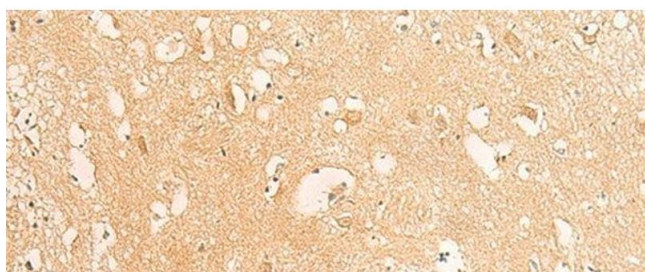
Preservative: Sodium azide

Precaution of Use: This product contains Sodium azide: a POISONOUS AND HAZARDOUS SUBSTANCE which should be handled by trained staff only.

Storage: -20 °C

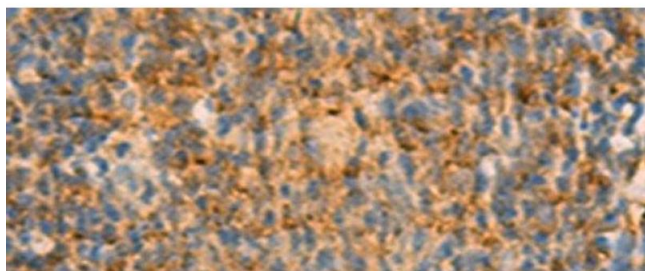
Storage Comment: Store at -20°C. Avoid freeze / thaw cycles.

## Images



### Immunohistochemistry (Paraffin-embedded Sections)

**Image 1.** Immunohistochemistry of paraffin-embedded Human brain tissue using IFITM2 Polyclonal Antibody at dilution of 1:25(x200)



#### Immunohistochemistry (Paraffin-embedded Sections)

**Image 2.** Immunohistochemistry of paraffin-embedded Human tonsil tissue using IFITM2 Polyclonal Antibody at dilution of 1:25(x200)