



Datasheet for ABIN7246778  
**anti-MTHFD2L antibody**



[Go to Product page](#)

2 Images

Overview

Quantity:	200 µL
Target:	MTHFD2L
Reactivity:	Human, Mouse, Rat
Host:	Rabbit
Clonality:	Polyclonal
Conjugate:	This MTHFD2L antibody is un-conjugated
Application:	ELISA, Immunohistochemistry (IHC)

Product Details

Immunogen:	Fusion protein of human MTHFD2L
Isotype:	IgG
Characteristics:	Polyclonal Antibody
Purification:	Antigen affinity purification

Target Details

Target:	MTHFD2L
Alternative Name:	MTHFD2L ( <a href="#">MTHFD2L Products</a> )
Background:	The specific function of this protein remains unknown.
UniProt:	<a href="#">Q9H903</a>

## Application Details

---

Application Notes: IHC 1:30-1:150, ELISA 1:5000-1:10000

Restrictions: For Research Use only

## Handling

---

Format: Liquid

Concentration: 0.84 mg/mL

Buffer: PBS with 0.05 % Sodium azide and 40 % Glycerol, pH 7.4

Preservative: Sodium azide

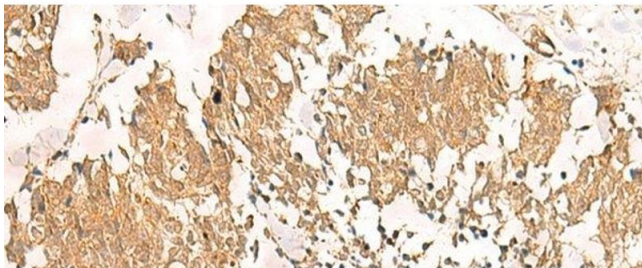
Precaution of Use: This product contains Sodium azide: a POISONOUS AND HAZARDOUS SUBSTANCE which should be handled by trained staff only.

Storage: -20 °C

Storage Comment: Store at -20°C. Avoid freeze / thaw cycles.

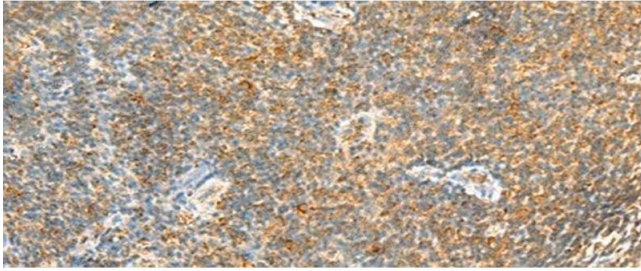
## Images

---



### Immunohistochemistry (Paraffin-embedded Sections)

**Image 1.** Immunohistochemistry of paraffin-embedded Human lung cancer tissue using MTHFD2L Polyclonal Antibody at dilution of 1:30(x200)



### Immunohistochemistry (Paraffin-embedded Sections)

**Image 2.** Immunohistochemistry of paraffin-embedded Human tonsil tissue using MTHFD2L Polyclonal Antibody at dilution of 1:30(x200)