

Datasheet for ABIN7246781

anti-Hemoglobin, epsilon 1 (HBe1) antibody[Go to Product page](#)**2** Images

Overview

Quantity:	200 µL
Target:	Hemoglobin, epsilon 1 (HBe1)
Reactivity:	Human
Host:	Rabbit
Clonality:	Polyclonal
Conjugate:	Un-conjugated
Application:	Western Blotting (WB), ELISA, Immunohistochemistry (IHC)

Product Details

Immunogen:	Fusion protein of human HBE1
Isotype:	IgG
Characteristics:	Polyclonal Antibody
Purification:	Antigen affinity purification

Target Details

Target:	Hemoglobin, epsilon 1 (HBe1)
Alternative Name:	HBE1 (HBe1 Products)
Target Type:	Viral Protein
Background:	The hemoglobin molecule is a tetramer consisting of two α-globin-like polypeptide chains and two β-globin-like chains. The human hemoglobin genes are expressed in a tightly

Target Details

developmentally controlled fashion. ϵ -globin (HBE1) is the predominantly expressed gene during the embryonic stage. The epsilon hemoglobin chain seems to be the best marker for fetal nucleated red blood cells (NRBCs). Anti-HBE1 may be used to label and isolate fetal cells from maternal blood and can be useful in prenatal diagnosis. This antibody specifically recognizes the HBE1 and doesn't cross-react with other globin chains.

Molecular Weight: Observed_MW: Refer to figures
Calculated_MW: 16 kDa

UniProt: [P02100](#)

Application Details

Application Notes: WB 1:500-1:2000, IHC 1:30-1:150, ELISA 1:5000-1:10000

Restrictions: For Research Use only

Handling

Format: Liquid

Concentration: 0.54 mg/mL

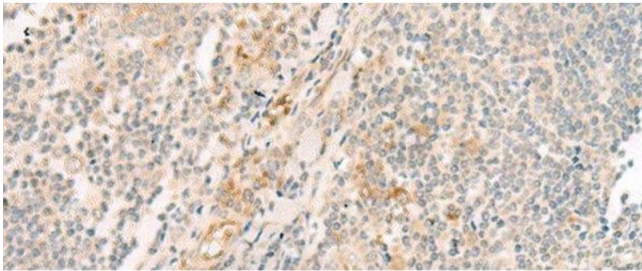
Buffer: PBS with 0.05 % Sodium azide and 40 % Glycerol, pH 7.4

Preservative: Sodium azide

Precaution of Use: This product contains Sodium azide: a POISONOUS AND HAZARDOUS SUBSTANCE which should be handled by trained staff only.

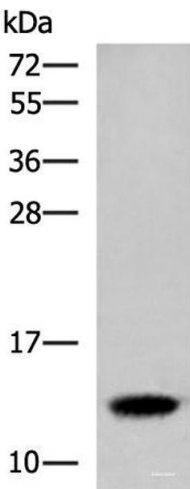
Storage: -20 °C

Storage Comment: Store at -20°C. Avoid freeze / thaw cycles.



Immunohistochemistry (Paraffin-embedded Sections)

Image 1. Immunohistochemistry of paraffin-embedded Human tonsil tissue using HBE1 Polyclonal Antibody at dilution of 1:30(x200)



Western Blotting

Image 2. Western blot analysis of Human placenta tissue lysate using HBE1 Polyclonal Antibody at dilution of 1:300