

Datasheet for ABIN7246823

anti-SMUG1 antibody**1** Image[Go to Product page](#)

Overview

Quantity:	200 µL
Target:	SMUG1
Reactivity:	Human, Mouse, Rat
Host:	Rabbit
Clonality:	Polyclonal
Conjugate:	This SMUG1 antibody is un-conjugated
Application:	ELISA, Immunohistochemistry (IHC)

Product Details

Immunogen:	Fusion protein of human SMUG1
Isotype:	IgG
Characteristics:	Polyclonal Antibody
Purification:	Antigen affinity purification

Target Details

Target:	SMUG1
Alternative Name:	SMUG1 (SMUG1 Products)
Background:	This gene encodes a protein that participates in base excision repair by removing uracil from single- and double-stranded DNA. Many alternatively spliced transcript variants exist for this gene, the full-length nature is known for some but not all of the variants.

Target Details

UniProt:	Q53HV7
Pathways:	DNA Damage Repair

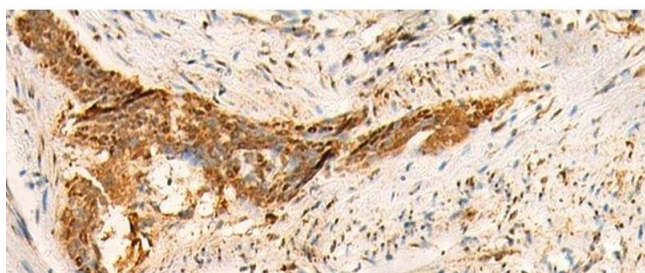
Application Details

Application Notes:	IHC 1:50-1:300, ELISA 1:5000-1:10000
Restrictions:	For Research Use only

Handling

Format:	Liquid
Concentration:	0.84 mg/mL
Buffer:	PBS with 0.05 % Sodium azide and 40 % Glycerol, pH 7.4
Preservative:	Sodium azide
Precaution of Use:	This product contains Sodium azide: a POISONOUS AND HAZARDOUS SUBSTANCE which should be handled by trained staff only.
Storage:	-20 °C
Storage Comment:	Store at -20°C. Avoid freeze / thaw cycles.

Images



Immunohistochemistry (Paraffin-embedded Sections)

Image 1. Immunohistochemistry of paraffin-embedded Human esophagus cancer tissue using SMUG1 Polyclonal Antibody at dilution of 1:50(x200)