



[Go to Product page](#)

Datasheet for ABIN7246859

## anti-Lysozyme-Like 1 antibody

### 1 Image

#### Overview

Quantity:	200 µL
Target:	Lysozyme-Like 1 (LYZL1)
Reactivity:	Human, Mouse
Host:	Rabbit
Clonality:	Polyclonal
Conjugate:	This Lysozyme-Like 1 antibody is un-conjugated
Application:	ELISA, Immunohistochemistry (IHC)

#### Product Details

Immunogen:	Fusion protein of human LYZL1
Isotype:	IgG
Characteristics:	Polyclonal Antibody
Purification:	Antigen affinity purification

#### Target Details

Target:	Lysozyme-Like 1 (LYZL1)
Alternative Name:	LYZL1 ( <a href="#">LYZL1 Products</a> )

**Background:** The lysozyme family of proteins has an important role in host defense and is associated with the monocyte-macrophage system and enhances the activity of immunoagents. The mammalian lysozyme gene family is much larger than previously appreciated and consists of at least eight distinct genes scattered around the genome. C-type lysozymes are specifically

## Target Details

involved catalyzing the hydrolysis of Beta-1,4 glycosidic bonds of the peptidoglycan of bacterial cell walls. As a homolog of human C-type lysozyme, LYZL1 is an intra-acrosomal, nonbacteriolytic, c lysozyme-like protein recently isolated from human spermatozoa.

UniProt: [Q6UWQ5](#)

## Application Details

Application Notes: IHC 1:50-1:300, ELISA 1:5000-1:10000

Restrictions: For Research Use only

## Handling

Format: Liquid

Concentration: 1.26 mg/mL

Buffer: PBS with 0.05 % Sodium azide and 40 % Glycerol, pH 7.4

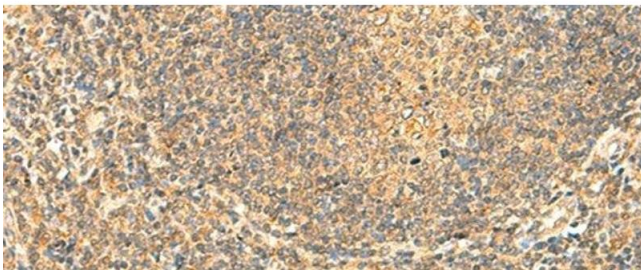
Preservative: Sodium azide

Precaution of Use: This product contains Sodium azide: a POISONOUS AND HAZARDOUS SUBSTANCE which should be handled by trained staff only.

Storage: -20 °C

Storage Comment: Store at -20°C. Avoid freeze / thaw cycles.

## Images



### Immunohistochemistry (Paraffin-embedded Sections)

**Image 1.** Immunohistochemistry of paraffin-embedded Human tonsil tissue using LYZL1 Polyclonal Antibody at dilution of 1:50(x200)