

Datasheet for ABIN7246877

**anti-MTHFS antibody****2** Images[Go to Product page](#)

## Overview

Quantity:	200 µL
Target:	MTHFS
Reactivity:	Human, Mouse
Host:	Rabbit
Clonality:	Polyclonal
Conjugate:	This MTHFS antibody is un-conjugated
Application:	ELISA, Immunohistochemistry (IHC)

## Product Details

Immunogen:	Fusion protein of human MTHFS
Isotype:	IgG
Characteristics:	Polyclonal Antibody
Purification:	Antigen affinity purification

## Target Details

Target:	MTHFS
Alternative Name:	MTHFS ( <a href="#">MTHFS Products</a> )
Background:	The protein encoded by this gene is an enzyme that catalyzes the conversion of 5-formyltetrahydrofolate to 5,10-methenyltetrahydrofolate, a precursor of reduced folates involved in 1-carbon metabolism. An increased activity of the encoded protein can result in an increased folate turnover rate and folate depletion. Three transcript variants encoding two

## Target Details

different isoforms have been found for this gene.

UniProt: [P49914](#)

## Application Details

Application Notes: IHC 1:40-1:200, ELISA 1:5000-1:10000

Restrictions: For Research Use only

## Handling

Format: Liquid

Concentration: 0.78 mg/mL

Buffer: PBS with 0.05 % Sodium azide and 40 % Glycerol, pH 7.4

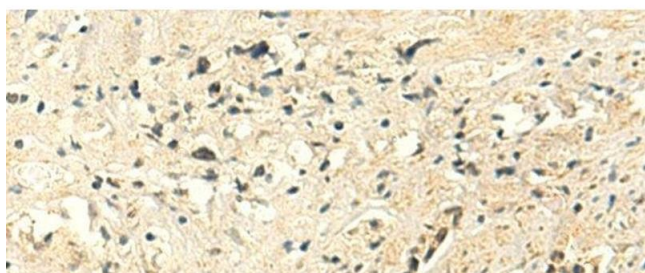
Preservative: Sodium azide

Precaution of Use: This product contains Sodium azide: a POISONOUS AND HAZARDOUS SUBSTANCE which should be handled by trained staff only.

Storage: -20 °C

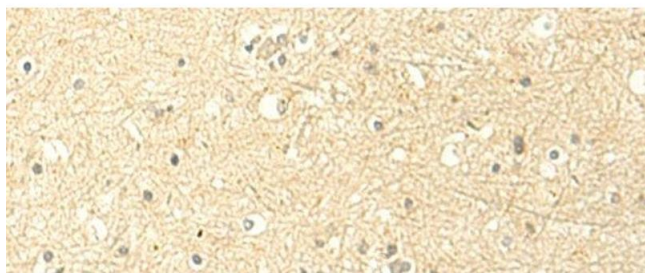
Storage Comment: Store at -20°C. Avoid freeze / thaw cycles.

## Images



### Immunohistochemistry (Paraffin-embedded Sections)

**Image 1.** Immunohistochemistry of paraffin-embedded Human prostate cancer tissue using MTHFS Polyclonal Antibody at dilution of 1:50(x200)



#### Immunohistochemistry (Paraffin-embedded Sections)

**Image 2.** Immunohistochemistry of paraffin-embedded Human brain tissue using MTHFS Polyclonal Antibody at dilution of 1:50(x200)