

Datasheet for ABIN7246880

**anti-RPL13A antibody**

3 Images

[Go to Product page](#)

## Overview

Quantity:	200 µL
Target:	RPL13A
Reactivity:	Human, Mouse, Rat
Host:	Rabbit
Clonality:	Polyclonal
Conjugate:	This RPL13A antibody is un-conjugated
Application:	Western Blotting (WB), ELISA, Immunohistochemistry (IHC)

## Product Details

Immunogen:	Fusion protein of human RPL13A
Isotype:	IgG
Characteristics:	Polyclonal Antibody
Purification:	Antigen affinity purification

## Target Details

Target:	RPL13A
Alternative Name:	RPL13A ( <a href="#">RPL13A Products</a> )
Background:	Ribosomes, the organelles that catalyze protein synthesis, consist of a small 40S subunit and a large 60S subunit. Together these subunits are composed of 4 RNA species and approximately 80 structurally distinct proteins. This gene encodes a member of the L13P family of ribosomal proteins that is a component of the 60S subunit. The encoded protein also plays a role in the

## Target Details

repression of inflammatory genes as a component of the IFN-gamma-activated inhibitor of translation (GAIT) complex. This gene is co-transcribed with the small nucleolar RNA genes U32, U33, U34, and U35, which are located in the second, fourth, fifth, and sixth introns, respectively. As is typical for genes encoding ribosomal proteins, there are multiple processed pseudogenes of this gene dispersed throughout the genome. Alternatively spliced transcript variants encoding multiple isoforms have been observed for this gene.

Molecular Weight:	Observed_MW: Refer to figures Calculated_MW: 24 kDa
-------------------	--

UniProt:	<a href="#">P40429</a>
----------	------------------------

## Application Details

Application Notes:	WB 1:1000-1:5000, IHC 1:50-1:300, ELISA 1:5000-1:10000
--------------------	--

Restrictions:	For Research Use only
---------------	-----------------------

## Handling

Format:	Liquid
---------	--------

Concentration:	1.68 mg/mL
----------------	------------

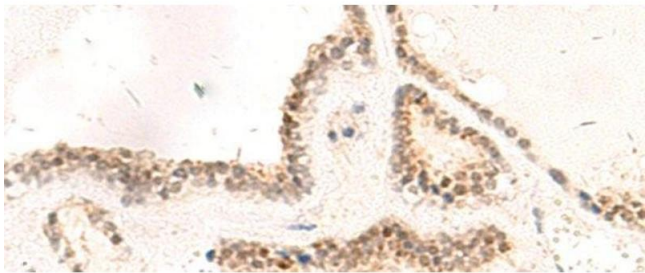
Buffer:	PBS with 0.05 % Sodium azide and 40 % Glycerol, pH 7.4
---------	--

Preservative:	Sodium azide
---------------	--------------

Precaution of Use:	This product contains Sodium azide: a POISONOUS AND HAZARDOUS SUBSTANCE which should be handled by trained staff only.
--------------------	--

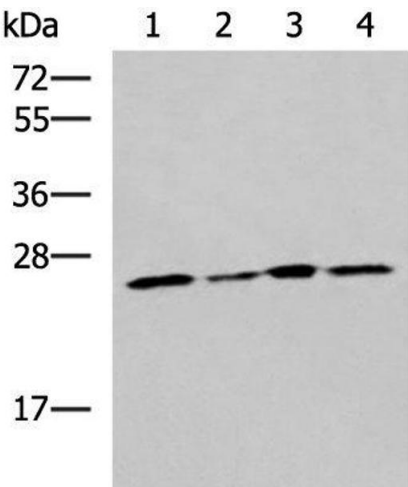
Storage:	-20 °C
----------	--------

Storage Comment:	Store at -20°C. Avoid freeze / thaw cycles.
------------------	---



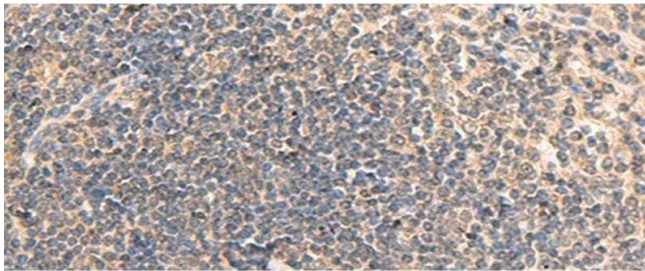
Immunohistochemistry (Paraffin-embedded Sections)

**Image 1.** Immunohistochemistry of paraffin-embedded Human thyroid cancer tissue using RPL13A Polyclonal Antibody at dilution of 1:95(x200)



Western Blotting

**Image 2.** Western blot analysis of LOVO, Hela, A549, and HT29 cell lysates using RPL13A Polyclonal Antibody at dilution of 1:1600



Immunohistochemistry (Paraffin-embedded Sections)

**Image 3.** Immunohistochemistry of paraffin-embedded Human tonsil tissue using RPL13A Polyclonal Antibody at dilution of 1:95(x200)