



Datasheet for ABIN7246901
anti-DGCR6L antibody



[Go to Product page](#)

3 Images

Overview

Quantity:	200 µL
Target:	DGCR6L
Reactivity:	Human
Host:	Rabbit
Clonality:	Polyclonal
Conjugate:	This DGCR6L antibody is un-conjugated
Application:	ELISA, Western Blotting (WB), Immunohistochemistry (IHC)

Product Details

Immunogen:	Fusion protein of human DGCR6L
Isotype:	IgG
Characteristics:	Polyclonal Antibody
Purification:	Antigen affinity purification

Target Details

Target:	DGCR6L
Alternative Name:	DGCR6L (DGCR6L Products)
Background:	This gene, the result of a duplication at this locus, is one of two functional genes encoding nearly identical proteins that have similar expression patterns. The product of this gene is a protein that shares homology with the Drosophila gonadal protein, expressed in gonadal tissues and germ cells, and with the human laminin gamma-1 chain that functions in cell

Target Details

attachment and migration. This gene is located in a region of chromosome 22 implicated in the DiGeorge syndrome, one facet of a broader collection of anomalies referred to as the CATCH 22 syndrome.

Molecular Weight: Observed_MW: Refer to figures
Calculated_MW: 25 kDa

UniProt: [Q9BY27](#)

Application Details

Application Notes: WB 1:1000-1:5000, IHC 1:50-1:300, ELISA 1:5000-1:10000

Restrictions: For Research Use only

Handling

Format: Liquid

Concentration: 1.14 mg/mL

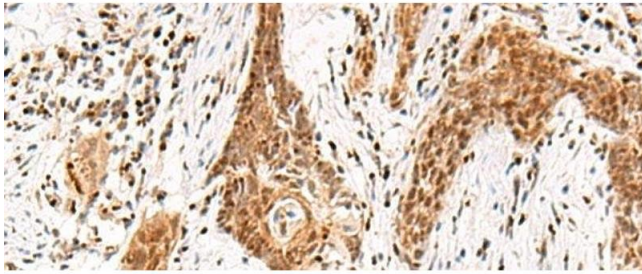
Buffer: PBS with 0.05 % Sodium azide and 40 % Glycerol, pH 7.4

Preservative: Sodium azide

Precaution of Use: This product contains Sodium azide: a POISONOUS AND HAZARDOUS SUBSTANCE which should be handled by trained staff only.

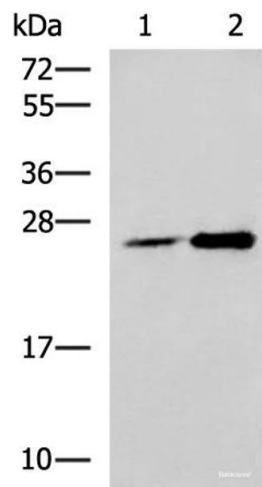
Storage: -20 °C

Storage Comment: Store at -20°C. Avoid freeze / thaw cycles.



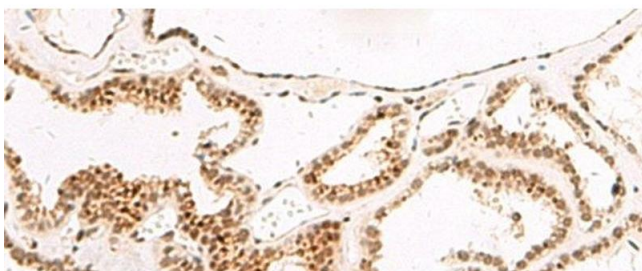
Immunohistochemistry (Paraffin-embedded Sections)

Image 1. Immunohistochemistry of paraffin-embedded Human esophagus cancer tissue using DGCR6L Polyclonal Antibody at dilution of 1:65(x200)



Western Blotting

Image 2. Western blot analysis of 293T cell lysates using DGCR6L Polyclonal Antibody at dilution of 1:800



Immunohistochemistry (Paraffin-embedded Sections)

Image 3. Immunohistochemistry of paraffin-embedded Human thyroid cancer tissue using DGCR6L Polyclonal Antibody at dilution of 1:65(x200)