

Datasheet for ABIN7246904  
**anti-DCAF10 antibody**



[Go to Product page](#)

2 Images

## Overview

Quantity:	200 µL
Target:	DCAF10
Reactivity:	Human, Mouse
Host:	Rabbit
Clonality:	Polyclonal
Conjugate:	This DCAF10 antibody is un-conjugated
Application:	ELISA, Immunohistochemistry (IHC)

## Product Details

Immunogen:	Fusion protein of human DCAF10
Isotype:	IgG
Characteristics:	Polyclonal Antibody
Purification:	Antigen affinity purification

## Target Details

Target:	DCAF10
Alternative Name:	DCAF10 ( <a href="#">DCAF10 Products</a> )
Background:	May function as a substrate receptor for CUL4-DDB1 E3 ubiquitin-protein ligase complex.
UniProt:	<a href="#">Q5QP82</a>

## Application Details

---

Application Notes: IHC 1:50-1:300, ELISA 1:5000-1:10000

---

Restrictions: For Research Use only

---

## Handling

---

Format: Liquid

---

Concentration: 2.28 mg/mL

---

Buffer: PBS with 0.05 % Sodium azide and 40 % Glycerol, pH 7.4

---

Preservative: Sodium azide

---

Precaution of Use: This product contains Sodium azide: a POISONOUS AND HAZARDOUS SUBSTANCE which should be handled by trained staff only.

---

Storage: -20 °C

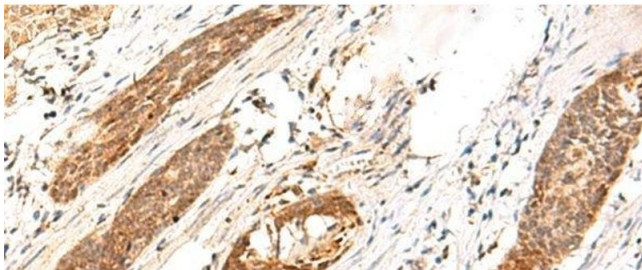
---

Storage Comment: Store at -20°C. Avoid freeze / thaw cycles.

---

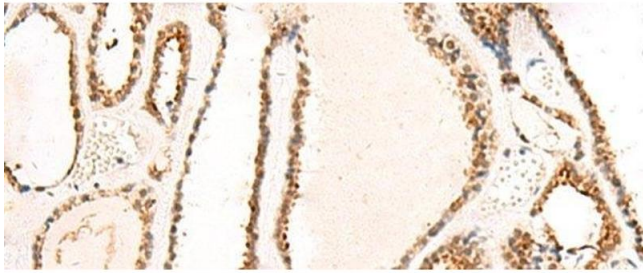
## Images

---



### Immunohistochemistry (Paraffin-embedded Sections)

**Image 1.** Immunohistochemistry of paraffin-embedded Human esophagus cancer tissue using DCAF10 Polyclonal Antibody at dilution of 1:130(x200)



#### Immunohistochemistry (Paraffin-embedded Sections)

**Image 2.** Immunohistochemistry of paraffin-embedded Human thyroid cancer tissue using DCAF10 Polyclonal Antibody at dilution of 1:130(x200)