



[Go to Product page](#)

Datasheet for ABIN7246952
anti-GLYATL2 antibody

2 Images

Overview

Quantity:	200 µL
Target:	GLYATL2
Reactivity:	Human
Host:	Rabbit
Clonality:	Polyclonal
Conjugate:	This GLYATL2 antibody is un-conjugated
Application:	ELISA, Immunohistochemistry (IHC)

Product Details

Immunogen:	Fusion protein of human GLYATL2
Isotype:	IgG
Characteristics:	Polyclonal Antibody
Purification:	Antigen affinity purification

Target Details

Target:	GLYATL2
Alternative Name:	GLYATL2 (GLYATL2 Products)
Background:	GLYATL2 (Glycine-N-Acyltransferase Like 2) is a Protein Coding gene. Among its related pathways are Amino Acid conjugation and Cytochrome P450 - arranged by substrate type. Gene Ontology (GO) annotations related to this gene include transferase activity, transferring acyl groups other than amino-acyl groups and glycine N-acyltransferase activity. An important

Target Details

paralog of this gene is GLYATL1B.

UniProt: [Q8WU03](#)

Application Details

Application Notes: IHC 1:50-1:300, ELISA 1:5000-1:10000

Restrictions: For Research Use only

Handling

Format: Liquid

Concentration: 0.72 mg/mL

Buffer: PBS with 0.05 % Sodium azide and 40 % Glycerol, pH 7.4

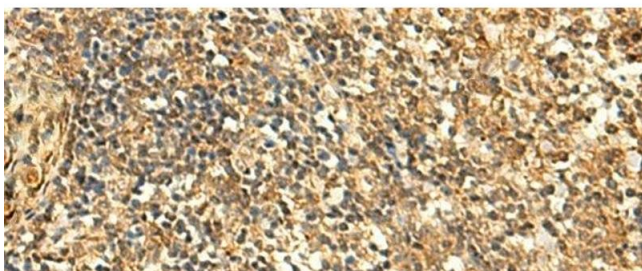
Preservative: Sodium azide

Precaution of Use: This product contains Sodium azide: a POISONOUS AND HAZARDOUS SUBSTANCE which should be handled by trained staff only.

Storage: -20 °C

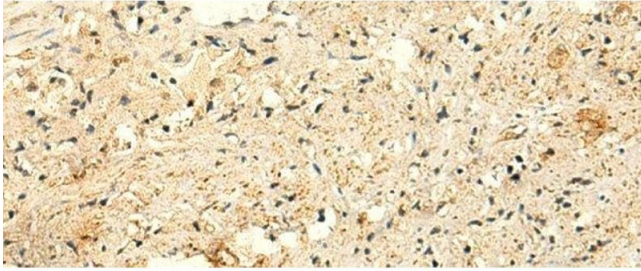
Storage Comment: Store at -20°C. Avoid freeze / thaw cycles.

Images



Immunohistochemistry (Paraffin-embedded Sections)

Image 1. Immunohistochemistry of paraffin-embedded Human tonsil tissue using GLYATL2 Polyclonal Antibody at dilution of 1:50(x200)



Immunohistochemistry (Paraffin-embedded Sections)

Image 2. Immunohistochemistry of paraffin-embedded Human prostate cancer tissue using GLYATL2 Polyclonal Antibody at dilution of 1:50(x200)