

Datasheet for ABIN7246991

**anti-DUSP7 antibody**[Go to Product page](#)**1** Image

## Overview

|              |                                      |
|--------------|--------------------------------------|
| Quantity:    | 200 µL                               |
| Target:      | DUSP7                                |
| Reactivity:  | Human, Mouse, Rat                    |
| Host:        | Rabbit                               |
| Clonality:   | Polyclonal                           |
| Conjugate:   | This DUSP7 antibody is un-conjugated |
| Application: | Immunohistochemistry (IHC), ELISA    |

## Product Details

|                  |                               |
|------------------|-------------------------------|
| Immunogen:       | Fusion protein of human DUSP7 |
| Isotype:         | IgG                           |
| Characteristics: | Polyclonal Antibody           |
| Purification:    | Antigen affinity purification |

## Target Details

|                   |  |
|-------------------|--|
| Target:           | DUSP7  |
| Alternative Name: | DUSP7 ( <a href="#">DUSP7 Products</a> )   |
| Background:       | Dual-specificity phosphatases (DUSPs) constitute a large heterogeneous subgroup of the type I cysteine-based protein-tyrosine phosphatase superfamily. DUSPs are characterized by their ability to dephosphorylate both tyrosine and serine/threonine residues. DUSP7 belongs to a class of DUSPs, designated MKPs, that dephosphorylate MAPK (mitogen-activated protein |

## Target Details

kinase) proteins ERK (see MIM 601795), JNK (see MIM 601158), and p38 (see MIM 600289) with specificity distinct from that of individual MKP proteins. MKPs contain a highly conserved C-terminal catalytic domain and an N-terminal Cdc25 (see MIM 116947)-like (CH2) domain. MAPK activation cascades mediate various physiologic processes, including cellular proliferation, apoptosis, differentiation, and stress responses (summary by Patterson et al., 2009 [PubMed 19228121]).

UniProt: [Q16829](#)

Pathways: [Neurotrophin Signaling Pathway](#), [Activation of Innate immune Response](#), [Toll-Like Receptors Cascades](#)

## Application Details

Application Notes: IHC 1:50-1:300, ELISA 1:5000-1:10000

Restrictions: For Research Use only

## Handling

Format: Liquid

Concentration: 0.72 mg/mL

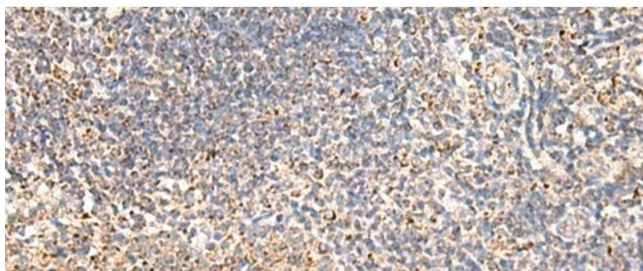
Buffer: PBS with 0.05 % Sodium azide and 40 % Glycerol, pH 7.4

Preservative: Sodium azide

Precaution of Use: This product contains Sodium azide: a POISONOUS AND HAZARDOUS SUBSTANCE which should be handled by trained staff only.

Storage: -20 °C

Storage Comment: Store at -20°C. Avoid freeze / thaw cycles.



#### Immunohistochemistry (Paraffin-embedded Sections)

**Image 1.** Immunohistochemistry of paraffin-embedded Human tonsil tissue using DUSP7 Polyclonal Antibody at dilution of 1:50(x200)