

Datasheet for ABIN7247063

anti-LMCD1 antibody**3** Images[Go to Product page](#)

Overview

Quantity:	200 µL
Target:	LMCD1
Reactivity:	Human, Mouse
Host:	Rabbit
Clonality:	Polyclonal
Conjugate:	This LMCD1 antibody is un-conjugated
Application:	ELISA, Western Blotting (WB), Immunohistochemistry (IHC)

Product Details

Immunogen:	Fusion protein of human LMCD1
Isotype:	IgG
Characteristics:	Polyclonal Antibody
Purification:	Antigen affinity purification

Target Details

Target:	LMCD1
Alternative Name:	LMCD1 (LMCD1 Products)
Background:	This gene encodes a member of the LIM-domain family of zinc finger proteins. The encoded protein contains an N-terminal cysteine-rich domain and two C-terminal LIM domains. The presence of LIM domains suggests involvement in protein-protein interactions. The protein may act as a co-regulator of transcription along with other transcription factors. Alternate splicing

Target Details

	results in multiple transcript variants of this gene.
Molecular Weight:	Observed_MW: Refer to figures Calculated_MW: 41 kDa
UniProt:	Q9NZU5

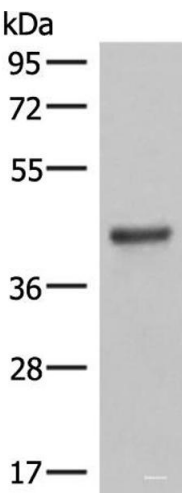
Application Details

Application Notes:	WB 1:500-1:2000, IHC 1:50-1:300, ELISA 1:5000-1:10000
Restrictions:	For Research Use only

Handling

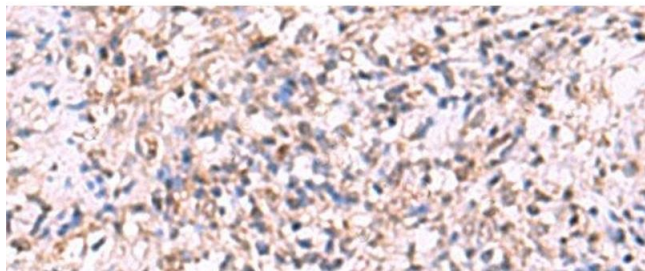
Format:	Liquid
Concentration:	1.74 mg/mL
Buffer:	PBS with 0.05 % Sodium azide and 40 % Glycerol, pH 7.4
Preservative:	Sodium azide
Precaution of Use:	This product contains Sodium azide: a POISONOUS AND HAZARDOUS SUBSTANCE which should be handled by trained staff only.
Storage:	-20 °C
Storage Comment:	Store at -20°C. Avoid freeze / thaw cycles.

Images



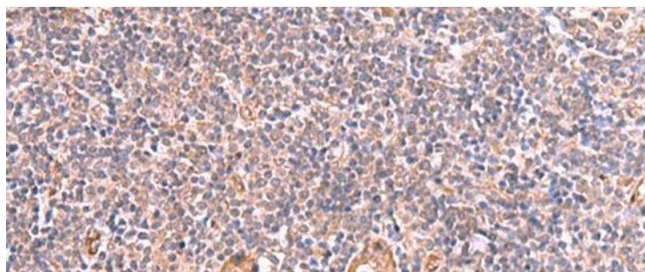
Western Blotting

Image 1. Western blot analysis of Mouse lung tissue lysates using LMCD1 Polyclonal Antibody at dilution of 1:550



Immunohistochemistry (Paraffin-embedded Sections)

Image 2. Immunohistochemistry of paraffin-embedded Human cervical cancer tissue using LMCD1 Polyclonal Antibody at dilution of 1:100(x200)



Immunohistochemistry (Paraffin-embedded Sections)

Image 3. Immunohistochemistry of paraffin-embedded Human tonsil tissue using LMCD1 Polyclonal Antibody at dilution of 1:100(x200)