



Datasheet for ABIN7247078
anti-SAMSN1 antibody



[Go to Product page](#)

2 Images

Overview

Quantity:	200 µL
Target:	SAMSN1
Reactivity:	Human, Mouse
Host:	Rabbit
Clonality:	Polyclonal
Conjugate:	This SAMSN1 antibody is un-conjugated
Application:	Western Blotting (WB), ELISA, Immunohistochemistry (IHC)

Product Details

Immunogen:	Fusion protein of human SAMSN1
Isotype:	IgG
Characteristics:	Polyclonal Antibody
Purification:	Antigen affinity purification

Target Details

Target:	SAMSN1
Alternative Name:	SAMSN1 (SAMSN1 Products)
Background:	SAMSN1 is a member of a novel gene family of putative adaptors and scaffold proteins containing SH3 and SAM (sterile alpha motif) domains (Claudio et al., 2001 [PubMed 11536050]).

Target Details

Molecular Weight: Observed_MW: Refer to figures
Calculated_MW: 42 kDa

UniProt: [Q9NSI8](#)

Application Details

Application Notes: WB 1:1000-1:5000, IHC 1:50-1:300, ELISA 1:5000-1:10000

Restrictions: For Research Use only

Handling

Format: Liquid

Concentration: 1.38 mg/mL

Buffer: PBS with 0.05 % Sodium azide and 40 % Glycerol, pH 7.4

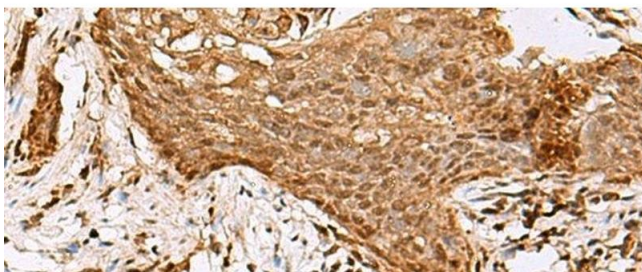
Preservative: Sodium azide

Precaution of Use: This product contains Sodium azide: a POISONOUS AND HAZARDOUS SUBSTANCE which should be handled by trained staff only.

Storage: -20 °C

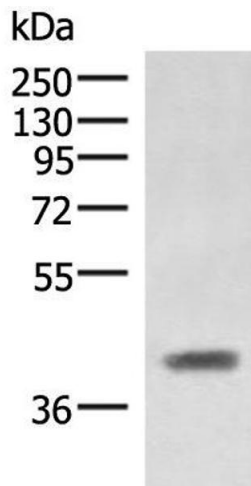
Storage Comment: Store at -20°C. Avoid freeze / thaw cycles.

Images



Immunohistochemistry (Paraffin-embedded Sections)

Image 1. Immunohistochemistry of paraffin-embedded Human esophagus cancer tissue using SAMSIN1 Polyclonal Antibody at dilution of 1:80(x200)



Western Blotting

Image 2. Western blot analysis of Mouse liver tissue lysate using SAMSN1 Polyclonal Antibody at dilution of 1:1000