



[Go to Product page](#)

Datasheet for ABIN7247096  
**anti-LDHAL6B antibody**

1 Image

Overview

Quantity:	200 µL
Target:	LDHAL6B
Reactivity:	Human
Host:	Rabbit
Clonality:	Polyclonal
Conjugate:	This LDHAL6B antibody is un-conjugated
Application:	ELISA, Immunohistochemistry (IHC)

Product Details

Immunogen:	Fusion protein of human LDHAL6B
Isotype:	IgG
Characteristics:	Polyclonal Antibody
Purification:	Antigen affinity purification

Target Details

Target:	LDHAL6B
Alternative Name:	LDHAL6B ( <a href="#">LDHAL6B Products</a> )
Background:	LDHAL6B belongs to the LDH/MDH superfamily. LDH family. The specific function of the protein remains unknown.
UniProt:	<a href="#">Q9BYZ2</a>

## Application Details

---

Application Notes: IHC 1:50-1:300, ELISA 1:5000-1:10000

---

Restrictions: For Research Use only

---

## Handling

---

Format: Liquid

---

Concentration: 1.14 mg/mL

---

Buffer: PBS with 0.05 % Sodium azide and 40 % Glycerol, pH 7.4

---

Preservative: Sodium azide

---

Precaution of Use: This product contains Sodium azide: a POISONOUS AND HAZARDOUS SUBSTANCE which should be handled by trained staff only.

---

Storage: -20 °C

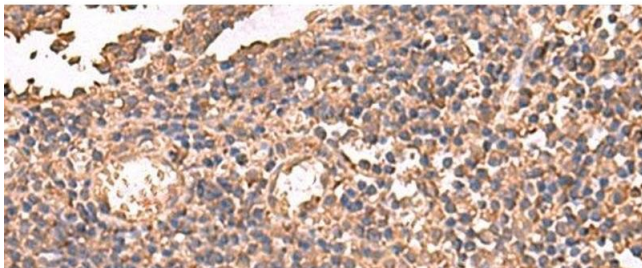
---

Storage Comment: Store at -20°C. Avoid freeze / thaw cycles.

---

## Images

---



### Immunohistochemistry (Paraffin-embedded Sections)

**Image 1.** Immunohistochemistry of paraffin-embedded Human tonsil tissue using LDHAL6B Polyclonal Antibody at dilution of 1:65(x200)