



[Go to Product page](#)

Datasheet for ABIN7247123

## anti-TUBD1 antibody

### 3 Images

#### Overview

Quantity:	200 µL
Target:	TUBD1
Reactivity:	Human, Mouse
Host:	Rabbit
Clonality:	Polyclonal
Conjugate:	This TUBD1 antibody is un-conjugated
Application:	Western Blotting (WB), Immunohistochemistry (IHC), ELISA

#### Product Details

Immunogen:	Fusion protein of human TUBD1
Isotype:	IgG
Characteristics:	Polyclonal Antibody
Purification:	Antigen affinity purification

#### Target Details

Target:	TUBD1
Alternative Name:	TUBD1 ( <a href="#">TUBD1 Products</a> )
Background:	In the elongating spermatid it is associated with the manchette, a specialized microtubule system present during reshaping of the sperm head.
Molecular Weight:	Observed_MW: Refer to figures

## Target Details

Calculated\_MW: 51 kDa

UniProt: [Q9UJT1](#)

Pathways: [Microtubule Dynamics](#)

## Application Details

Application Notes: WB 1:1000-1:5000, IHC 1:50-1:300, ELISA 1:5000-1:10000

Restrictions: For Research Use only

## Handling

Format: Liquid

Concentration: 1.26 mg/mL

Buffer: PBS with 0.05 % Sodium azide and 40 % Glycerol, pH 7.4

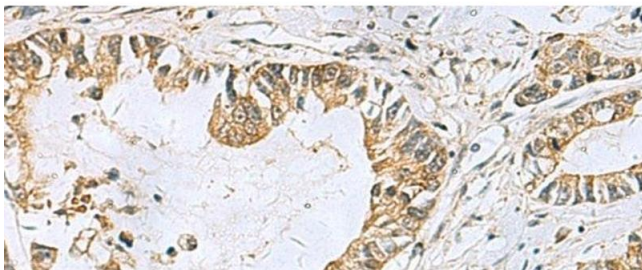
Preservative: Sodium azide

Precaution of Use: This product contains Sodium azide: a POISONOUS AND HAZARDOUS SUBSTANCE which should be handled by trained staff only.

Storage: -20 °C

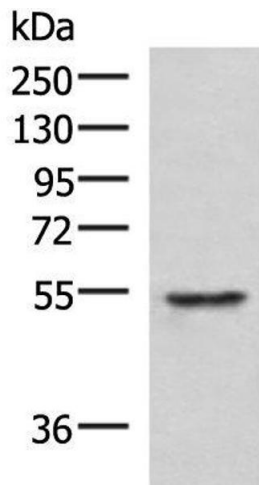
Storage Comment: Store at -20°C. Avoid freeze / thaw cycles.

## Images



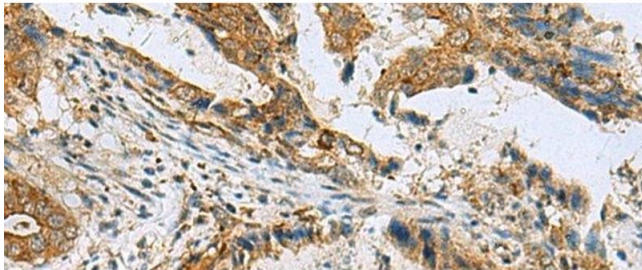
### Immunohistochemistry (Paraffin-embedded Sections)

**Image 1.** Immunohistochemistry of paraffin-embedded Human gastric cancer tissue using TUBD1 Polyclonal Antibody at dilution of 1:70(x200)



### Western Blotting

**Image 2.** Western blot analysis of Jurkat cell lysate using TUBD1 Polyclonal Antibody at dilution of 1:1000



### Immunohistochemistry (Paraffin-embedded Sections)

**Image 3.** Immunohistochemistry of paraffin-embedded Human cervical cancer tissue using TUBD1 Polyclonal Antibody at dilution of 1:70(x200)