

Datasheet for ABIN7247138

anti-RHAG antibody

3 Images

[Go to Product page](#)

Overview

Quantity:	200 µL
Target:	RHAG
Reactivity:	Human, Mouse
Host:	Rabbit
Clonality:	Polyclonal
Conjugate:	This RHAG antibody is un-conjugated
Application:	Western Blotting (WB), ELISA, Immunohistochemistry (IHC)

Product Details

Immunogen:	Fusion protein of human RHAG
Isotype:	IgG
Characteristics:	Polyclonal Antibody
Purification:	Antigen affinity purification

Target Details

Target:	RHAG
Alternative Name:	RHAG (RHAG Products)
Background:	The protein encoded by this gene is erythrocyte-specific and is thought to be part of a membrane channel that transports ammonium and carbon dioxide across the blood cell membrane. The encoded protein appears to interact with Rh blood group antigens and Rh30 polypeptides. Defects in this gene are a cause of regulator type Rh-null hemolytic anemia

Target Details

(RHN), or Rh-deficiency syndrome. RHAG (Rh-Associated Glycoprotein) is a Protein Coding gene. Diseases associated with RHAG include Anemia, Hemolytic, Rh-Null, Regulator Type and Stomatocytosis I. Among its related pathways are Transport of glucose and other sugars, bile salts and organic acids, metal ions and amine compounds and Erythrocytes take up carbon dioxide and release oxygen. GO annotations related to this gene include ankyrin binding and ammonium transmembrane transporter activity. An important paralog of this gene is RHCG.

Molecular Weight: Observed_MW: Refer to figures
Calculated_MW: 44 kDa

UniProt: [Q02094](#)

Application Details

Application Notes: WB 1:1000-1:5000, IHC 1:50-1:300, ELISA 1:5000-1:10000

Restrictions: For Research Use only

Handling

Format: Liquid

Concentration: 2.34 mg/mL

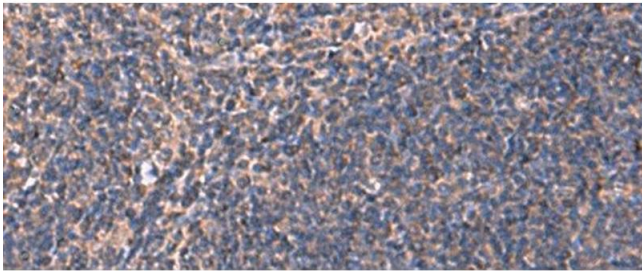
Buffer: PBS with 0.05 % Sodium azide and 40 % Glycerol, pH 7.4

Preservative: Sodium azide

Precaution of Use: This product contains Sodium azide: a POISONOUS AND HAZARDOUS SUBSTANCE which should be handled by trained staff only.

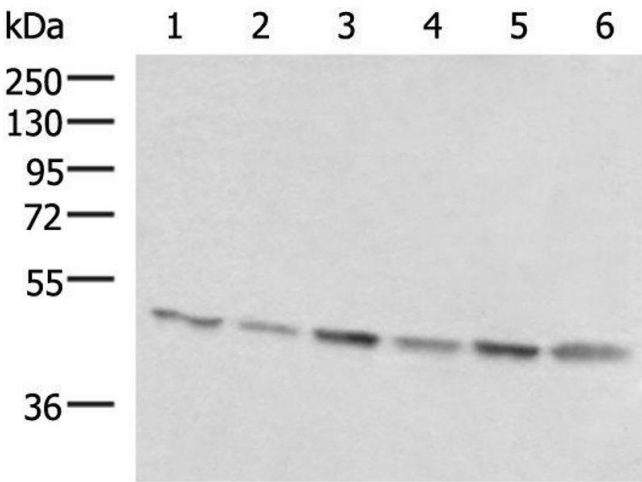
Storage: -20 °C

Storage Comment: Store at -20°C. Avoid freeze / thaw cycles.



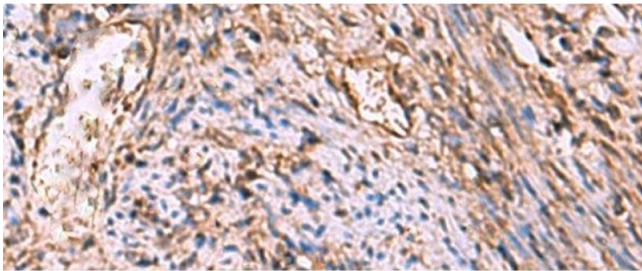
Immunohistochemistry (Paraffin-embedded Sections)

Image 1. Immunohistochemistry of paraffin-embedded Human tonsil tissue using RHAG Polyclonal Antibody at dilution of 1:130(x200)



Western Blotting

Image 2. Western blot analysis of 293T K562 and HepG2 cell lysates using RHAG Polyclonal Antibody at dilution of 1:1600



Immunohistochemistry (Paraffin-embedded Sections)

Image 3. Immunohistochemistry of paraffin-embedded Human cervical cancer tissue using RHAG Polyclonal Antibody at dilution of 1:130(x200)