

Datasheet for ABIN7247153

**anti-SMPD2 antibody****2** Images[Go to Product page](#)

## Overview

Quantity:	200 µL
Target:	SMPD2
Reactivity:	Human, Rat, Mouse
Host:	Rabbit
Clonality:	Polyclonal
Conjugate:	This SMPD2 antibody is un-conjugated
Application:	Western Blotting (WB), Immunohistochemistry (IHC), ELISA

## Product Details

Immunogen:	Fusion protein of human SMPD2
Isotype:	IgG
Characteristics:	Polyclonal Antibody
Purification:	Antigen affinity purification

## Target Details

Target:	SMPD2
Alternative Name:	SMPD2 ( <a href="#">SMPD2 Products</a> )
Background:	This gene encodes a protein which was initially identified as a sphingomyelinase based on sequence similarity between bacterial sphingomyelinases and a yeast protein. Subsequent studies showed that its biological function is less likely to be as a sphingomyelinase and instead as a lysophospholipase.

## Target Details

Molecular Weight:	Observed_MW: Refer to figures Calculated_MW: 48 kDa
UniProt:	<a href="#">O60906</a>
Pathways:	<a href="#">Neurotrophin Signaling Pathway</a>

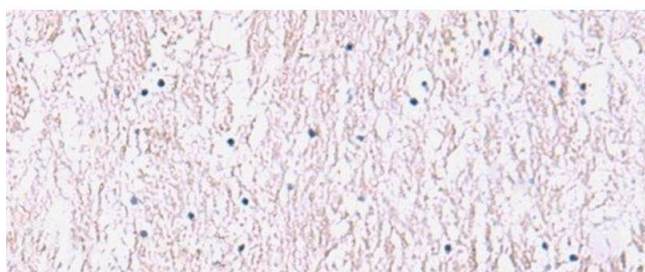
## Application Details

Application Notes:	WB 1:1000-1:5000, IHC 1:50-1:300, ELISA 1:5000-1:10000
Restrictions:	For Research Use only

## Handling

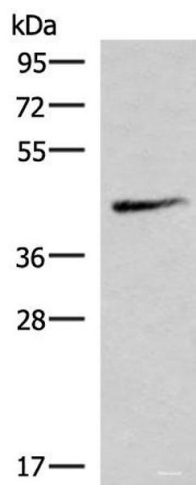
Format:	Liquid
Concentration:	1.62 mg/mL
Buffer:	PBS with 0.05 % Sodium azide and 40 % Glycerol, pH 7.4
Preservative:	Sodium azide
Precaution of Use:	This product contains Sodium azide: a POISONOUS AND HAZARDOUS SUBSTANCE which should be handled by trained staff only.
Storage:	-20 °C
Storage Comment:	Store at -20°C. Avoid freeze / thaw cycles.

## Images



### Immunohistochemistry (Paraffin-embedded Sections)

**Image 1.** Immunohistochemistry of paraffin-embedded Human brain tissue using SMPD2 Polyclonal Antibody at dilution of 1:90(x200)



Western Blotting

**Image 2.** Western blot analysis of Mouse lung tissue lysate using SMPD2 Polyclonal Antibody at dilution of 1:1000