



Datasheet for ABIN7247171 anti-MANSC1 antibody



[Go to Product page](#)

2 Images

Overview

Quantity:	200 µL
Target:	MANSC1
Reactivity:	Human
Host:	Rabbit
Clonality:	Polyclonal
Conjugate:	This MANSC1 antibody is un-conjugated
Application:	ELISA, Immunohistochemistry (IHC)

Product Details

Immunogen:	Fusion protein of human MANSC1
Isotype:	IgG
Characteristics:	Polyclonal Antibody
Purification:	Antigen affinity purification

Target Details

Target:	MANSC1
Alternative Name:	MANSC1 (MANSC1 Products)
Background:	MANSC1 (MANSC domain-containing protein 1), also known as LOH12CR3 (Loss of heterozygosity 12 chromosomal region 3 protein), is a 414 amino acid single-pass membrane protein. Expressed throughout the body, MANSC1 contains one MANSC domain and is encoded by a gene that is located on chromosome 12. Encoding over 1,100 genes within 132 million

Target Details

bases, chromosome 12 makes up about 4.5 % of the human genome. A number of skeletal deformities are linked to chromosome 12, including hypochondrogenesis, achondrogenesis and Kniest dysplasia. Chromosome 12 is also home to a homeobox gene cluster which encodes crucial transcription factors for morphogenesis, and the natural killer complex gene cluster encoding C-type lectin proteins which mediate the NK cell response to MHC I interaction.

UniProt: [Q9H8J5](#)

Application Details

Application Notes: IHC 1:50-1:300, ELISA 1:5000-1:10000

Restrictions: For Research Use only

Handling

Format: Liquid

Concentration: 1.8 mg/mL

Buffer: PBS with 0.05 % Sodium azide and 40 % Glycerol, pH 7.4

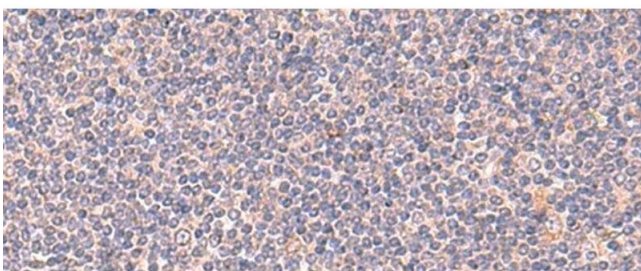
Preservative: Sodium azide

Precaution of Use: This product contains Sodium azide: a POISONOUS AND HAZARDOUS SUBSTANCE which should be handled by trained staff only.

Storage: -20 °C

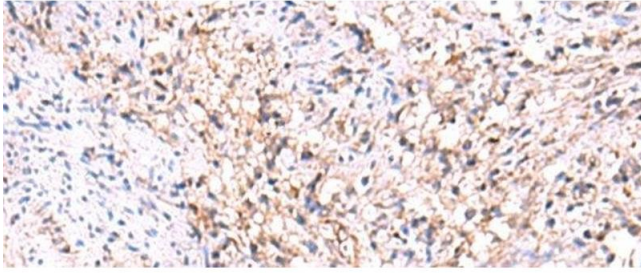
Storage Comment: Store at -20°C. Avoid freeze / thaw cycles.

Images



Immunohistochemistry (Paraffin-embedded Sections)

Image 1. Immunohistochemistry of paraffin-embedded Human tonsil tissue using MANS C1 Polyclonal Antibody at dilution of 1:105(x200)



Immunohistochemistry (Paraffin-embedded Sections)

Image 2. Immunohistochemistry of paraffin-embedded Human cervical cancer tissue using MANSC1 Polyclonal Antibody at dilution of 1:105(x200)