

Datasheet for ABIN7247201

**anti-NASP antibody****3** Images[Go to Product page](#)

## Overview

Quantity:	200 µL
Target:	NASP
Reactivity:	Human, Rat, Mouse
Host:	Rabbit
Clonality:	Polyclonal
Conjugate:	This NASP antibody is un-conjugated
Application:	Western Blotting (WB), Immunohistochemistry (IHC), ELISA

## Product Details

Immunogen:	Fusion protein of human NASP
Isotype:	IgG
Characteristics:	Polyclonal Antibody
Purification:	Antigen affinity purification

## Target Details

Target:	NASP
Alternative Name:	NASP ( <a href="#">NASP Products</a> )
Background:	This gene encodes a H1 histone binding protein that is involved in transporting histones into the nucleus of dividing cells. Multiple isoforms are encoded by transcript variants of this gene. The somatic form is expressed in all mitotic cells, is localized to the nucleus, and is coupled to the cell cycle. The testicular form is expressed in embryonic tissues, tumor cells, and the testis. In

## Target Details

male germ cells, this protein is localized to the cytoplasm of primary spermatocytes, the nucleus of spermatids, and the periacrosomal region of mature spermatozoa.

Molecular Weight: Observed\_MW: Refer to figures  
Calculated\_MW: 85 kDa

UniProt: [P49321](#)

## Application Details

Application Notes: WB 1:500-1:2000, IHC 1:50-1:300, ELISA 1:5000-1:10000

Restrictions: For Research Use only

## Handling

Format: Liquid

Concentration: 0.96 mg/mL

Buffer: PBS with 0.05 % Sodium azide and 40 % Glycerol, pH 7.4

Preservative: Sodium azide

Precaution of Use: This product contains Sodium azide: a POISONOUS AND HAZARDOUS SUBSTANCE which should be handled by trained staff only.

Storage: -20 °C

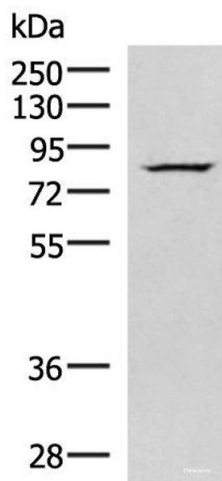
Storage Comment: Store at -20°C. Avoid freeze / thaw cycles.

## Images



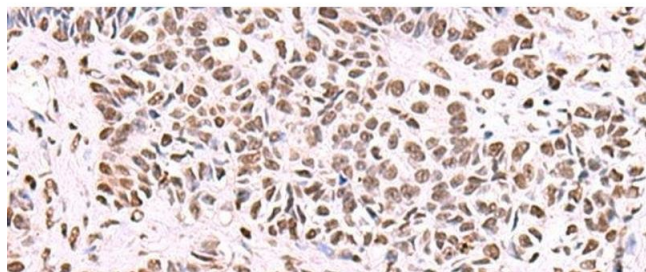
### Immunohistochemistry (Paraffin-embedded Sections)

**Image 1.** Immunohistochemistry of paraffin-embedded Human thyroid cancer tissue using NASP Polyclonal Antibody at dilution of 1:55(x200)



#### Western Blotting

**Image 2.** Western blot analysis of HepG2 cell lysate using NASP Polyclonal Antibody at dilution of 1:800



#### Immunohistochemistry (Paraffin-embedded Sections)

**Image 3.** Immunohistochemistry of paraffin-embedded Human ovarian cancer tissue using NASP Polyclonal Antibody at dilution of 1:55(x200)