

Datasheet for ABIN7247222

**anti-MPP1 antibody****2** Images[Go to Product page](#)

## Overview

Quantity:	200 µL
Target:	MPP1
Reactivity:	Human, Mouse
Host:	Rabbit
Clonality:	Polyclonal
Conjugate:	This MPP1 antibody is un-conjugated
Application:	ELISA, Immunohistochemistry (IHC)

## Product Details

Immunogen:	Fusion protein of human MPP1
Isotype:	IgG
Characteristics:	Polyclonal Antibody
Purification:	Antigen affinity purification

## Target Details

Target:	MPP1
Alternative Name:	MPP1 ( <a href="#">MPP1 Products</a> )
Background:	This gene encodes the prototype of the membrane-associated guanylate kinase (MAGUK) family proteins. MAGUKs interact with the cytoskeleton and regulate cell proliferation, signaling pathways, and intercellular junctions. The encoded protein is an extensively palmitoylated membrane phosphoprotein containing a PDZ domain, a Src homology 3 (SH3) motif, and a

## Target Details

guanylate kinase domain. This gene product interacts with various cytoskeletal proteins and cell junctional proteins in different tissue and cell types, and may be involved in the regulation of cell shape, hair cell development, neural patterning of the retina, and apico-basal polarity and tumor suppression pathways in non-erythroid cells. Multiple transcript variants encoding different isoforms have been found for this gene.

UniProt: [Q00013](#)

## Application Details

Application Notes: IHC 1:50-1:300, ELISA 1:5000-1:10000

Restrictions: For Research Use only

## Handling

Format: Liquid

Concentration: 0.9 mg/mL

Buffer: PBS with 0.05 % Sodium azide and 40 % Glycerol, pH 7.4

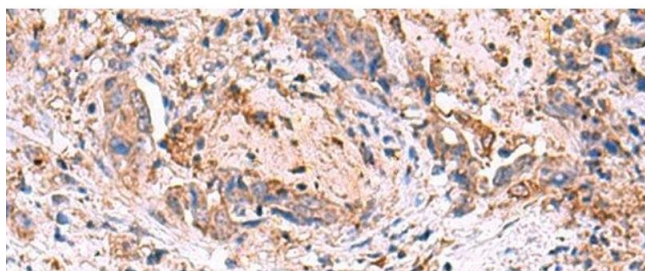
Preservative: Sodium azide

Precaution of Use: This product contains Sodium azide: a POISONOUS AND HAZARDOUS SUBSTANCE which should be handled by trained staff only.

Storage: -20 °C

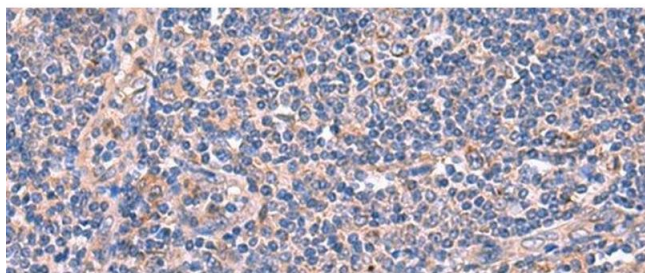
Storage Comment: Store at -20°C. Avoid freeze / thaw cycles.

## Images



### Immunohistochemistry (Paraffin-embedded Sections)

**Image 1.** Immunohistochemistry of paraffin-embedded Human cervical cancer tissue using MPP1 Polyclonal Antibody at dilution of 1:50(x200)



#### Immunohistochemistry (Paraffin-embedded Sections)

**Image 2.** Immunohistochemistry of paraffin-embedded Human tonsil tissue using MPP1 Polyclonal Antibody at dilution of 1:50(x200)