



[Go to Product page](#)

Datasheet for ABIN7247237  
**anti-GPKOW antibody**

2 Images

### Overview

Quantity:	200 µL
Target:	GPKOW
Reactivity:	Human
Host:	Rabbit
Clonality:	Polyclonal
Conjugate:	This GPKOW antibody is un-conjugated
Application:	Western Blotting (WB), ELISA, Immunohistochemistry (IHC)

### Product Details

Immunogen:	Fusion protein of human GPKOW
Isotype:	IgG
Characteristics:	Polyclonal Antibody
Purification:	Antigen affinity purification

### Target Details

Target:	GPKOW
Alternative Name:	GPKOW ( <a href="#">GPKOW Products</a> )
Background:	This gene encodes a putative RNA-binding protein containing G-patch and KOW (Kyprides, Ouzounis, Woese) domains. The encoded protein interacts directly with protein kinase A and protein kinase X and is also found associated with the spliceosome.

## Target Details

Molecular Weight: Observed\_MW: Refer to figures  
Calculated\_MW: 53 kDa

UniProt: [Q92917](#)

## Application Details

Application Notes: WB 1:1000-1:5000, IHC 1:100-1:500, ELISA 1:5000-1:10000

Restrictions: For Research Use only

## Handling

Format: Liquid

Concentration: 2.46 mg/mL

Buffer: PBS with 0.05 % Sodium azide and 40 % Glycerol, pH 7.4

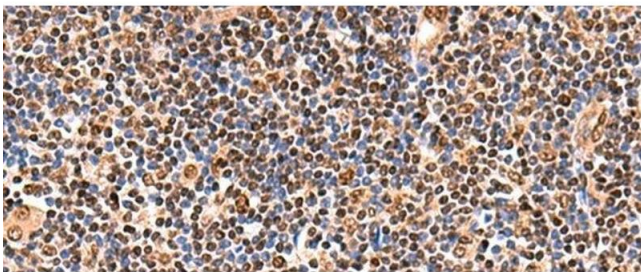
Preservative: Sodium azide

Precaution of Use: This product contains Sodium azide: a POISONOUS AND HAZARDOUS SUBSTANCE which should be handled by trained staff only.

Storage: -20 °C

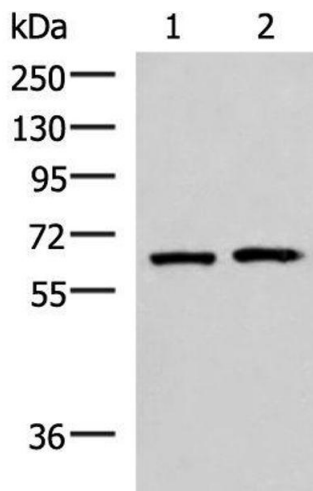
Storage Comment: Store at -20°C. Avoid freeze / thaw cycles.

## Images



### Immunohistochemistry (Paraffin-embedded Sections)

**Image 1.** Immunohistochemistry of paraffin-embedded Human tonsil tissue using GPKOW Polyclonal Antibody at dilution of 1:140(x200)



### Western Blotting

**Image 2.** Western blot analysis of 293T and Jurkat cell lysates using GPKOW Polyclonal Antibody at dilution of 1:2000