

## Datasheet for ABIN7247243 **anti-KATNAL1 antibody**

### 2 Images



[Go to Product page](#)

### Overview

Quantity:	200 µL
Target:	KATNAL1
Reactivity:	Human, Rat, Mouse
Host:	Rabbit
Clonality:	Polyclonal
Conjugate:	This KATNAL1 antibody is un-conjugated
Application:	Immunohistochemistry (IHC), ELISA

### Product Details

Immunogen:	Fusion protein of human KATNAL1
Isotype:	IgG
Characteristics:	Polyclonal Antibody
Purification:	Antigen affinity purification

### Target Details

Target:	KATNAL1
Alternative Name:	KATNAL1 ( <a href="#">KATNAL1 Products</a> )
Background:	Regulates microtubule dynamics in Sertoli cells, a process that is essential for spermiogenesis and male fertility. Severs microtubules in an ATP-dependent manner, promoting rapid reorganization of cellular microtubule arrays (By similarity). Has microtubule-severing activity in vitro (PubMed:26929214).

## Target Details

---

UniProt: [Q9BW62](#)

## Application Details

---

Application Notes: IHC 1:50-1:300, ELISA 1:5000-1:10000

Restrictions: For Research Use only

## Handling

---

Format: Liquid

Concentration: 1.68 mg/mL

Buffer: PBS with 0.05 % Sodium azide and 40 % Glycerol, pH 7.4

Preservative: Sodium azide

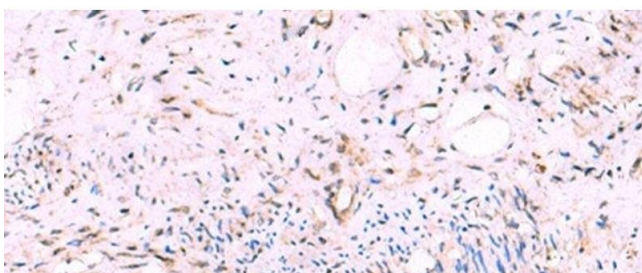
Precaution of Use: This product contains Sodium azide: a POISONOUS AND HAZARDOUS SUBSTANCE which should be handled by trained staff only.

Storage: -20 °C

Storage Comment: Store at -20°C. Avoid freeze / thaw cycles.

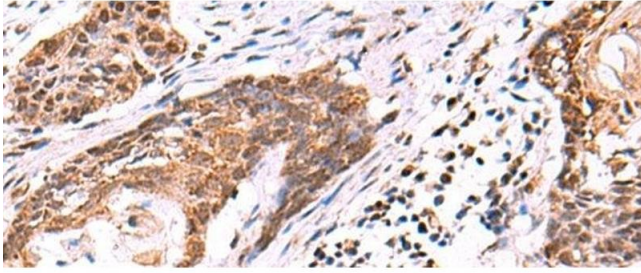
## Images

---



### Immunohistochemistry (Paraffin-embedded Sections)

**Image 1.** Immunohistochemistry of paraffin-embedded Human cervical cancer tissue using KATNAL1 Polyclonal Antibody at dilution of 1:95(x200)



#### Immunohistochemistry (Paraffin-embedded Sections)

**Image 2.** Immunohistochemistry of paraffin-embedded Human esophagus cancer tissue using KATNAL1 Polyclonal Antibody at dilution of 1:95(x200)