



[Go to Product page](#)

Datasheet for ABIN7247255  
**anti-ARIH2 antibody**

3 Images

### Overview

Quantity:	200 µL
Target:	ARIH2
Reactivity:	Human, Mouse
Host:	Rabbit
Clonality:	Polyclonal
Conjugate:	This ARIH2 antibody is un-conjugated
Application:	Western Blotting (WB), ELISA, Immunohistochemistry (IHC)

### Product Details

Immunogen:	Fusion protein of human ARIH2
Isotype:	IgG
Characteristics:	Polyclonal Antibody
Purification:	Antigen affinity purification

### Target Details

Target:	ARIH2
Alternative Name:	ARIH2 ( <a href="#">ARIH2 Products</a> )
Background:	TRIAD1, also known as ARIH2 (ariadne homolog 2) or ARI2, is a 493 amino acid protein that contains one IBR-type zinc finger and two RING-type zinc fingers and belongs to the ariadne subfamily of RBR proteins. Localized to the nucleus, TRIAD1 interacts with UBE2L3 and is thought to act as an E3 ubiquitin-protein ligase, functioning to accept ubiquitin from E2

## Target Details

---

ubiquitin-conjugating enzymes and transfer the acquired ubiquitin residue to target substrates. TRIAD1 is subject to post-translational DNA damage-dependent phosphorylation, probably by ATM or ATR. The gene encoding TRIAD1 maps to human chromosome 3, which houses over 1,100 genes, including a chemokine receptor (CKR) gene cluster and a variety of human cancer-related gene loci.

---

Molecular Weight: Observed\_MW: Refer to figures  
Calculated\_MW: 58 kDa

---

UniProt: [O95376](#)

## Application Details

---

Application Notes: WB 1:1000-1:5000, IHC 1:50-1:300, ELISA 1:5000-1:10000

---

Restrictions: For Research Use only

## Handling

---

Format: Liquid

---

Concentration: 1.38 mg/mL

---

Buffer: PBS with 0.05 % Sodium azide and 40 % Glycerol, pH 7.4

---

Preservative: Sodium azide

---

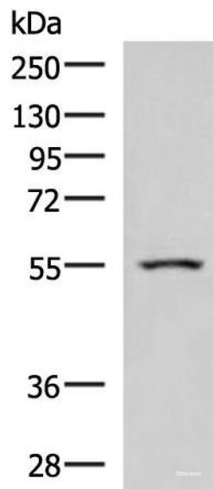
Precaution of Use: This product contains Sodium azide: a POISONOUS AND HAZARDOUS SUBSTANCE which should be handled by trained staff only.

---

Storage: -20 °C

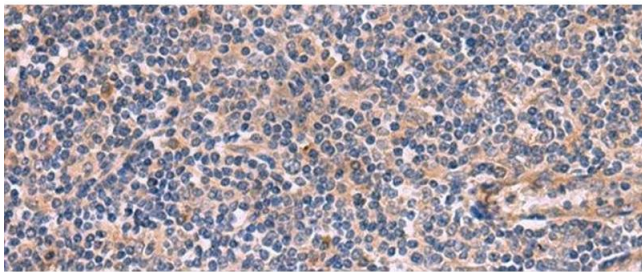
---

Storage Comment: Store at -20°C. Avoid freeze / thaw cycles.



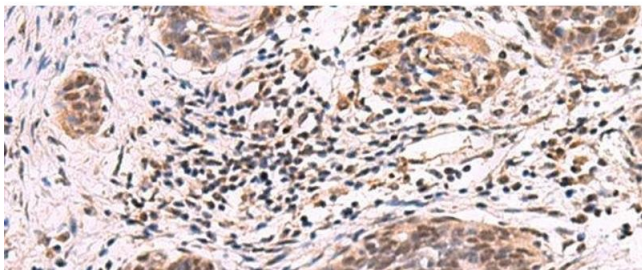
### Western Blotting

**Image 1.** Western blot analysis of Human heart tissue lysate using ARIH2 Polyclonal Antibody at dilution of 1:1000



### Immunohistochemistry (Paraffin-embedded Sections)

**Image 2.** Immunohistochemistry of paraffin-embedded Human tonsil tissue using ARIH2 Polyclonal Antibody at dilution of 1:80(x200)



### Immunohistochemistry (Paraffin-embedded Sections)

**Image 3.** Immunohistochemistry of paraffin-embedded Human esophagus cancer tissue using ARIH2 Polyclonal Antibody at dilution of 1:80(x200)