



[Go to Product page](#)

Datasheet for ABIN7247303

## anti-GSTCD antibody

### 2 Images

#### Overview

Quantity:	200 µL
Target:	GSTCD
Reactivity:	Human
Host:	Rabbit
Clonality:	Polyclonal
Conjugate:	This GSTCD antibody is un-conjugated
Application:	Western Blotting (WB), Immunohistochemistry (IHC), ELISA

#### Product Details

Immunogen:	Fusion protein of human GSTCD
Isotype:	IgG
Characteristics:	Polyclonal Antibody
Purification:	Antigen affinity purification

#### Target Details

Target:	GSTCD
Alternative Name:	GSTCD ( <a href="#">GSTCD Products</a> )
Background:	GSTCD (Glutathione S-Transferase C-Terminal Domain Containing) is a Protein Coding gene. Among its related pathways are Cytochrome P450 - arranged by substrate type. Gene Ontology (GO) annotations related to this gene include methyltransferase activity and rRNA methyltransferase activity.

## Target Details

Molecular Weight: Observed\_MW: Refer to figures  
Calculated\_MW: 71 kDa

UniProt: [Q8NEC7](#)

## Application Details

Application Notes: WB 1:500-1:2000, IHC 1:70-1:350, ELISA 1:5000-1:10000

Restrictions: For Research Use only

## Handling

Format: Liquid

Concentration: 1.2 mg/mL

Buffer: PBS with 0.05 % Sodium azide and 40 % Glycerol, pH 7.4

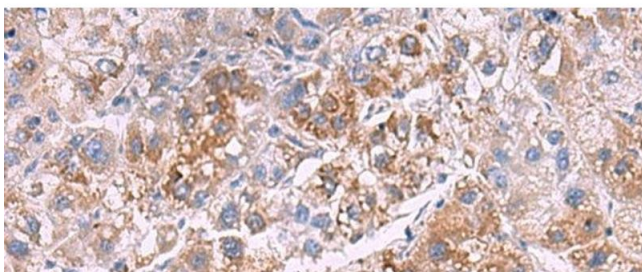
Preservative: Sodium azide

Precaution of Use: This product contains Sodium azide: a POISONOUS AND HAZARDOUS SUBSTANCE which should be handled by trained staff only.

Storage: -20 °C

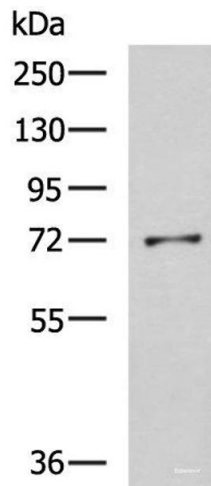
Storage Comment: Store at -20°C. Avoid freeze / thaw cycles.

## Images



### Immunohistochemistry (Paraffin-embedded Sections)

**Image 1.** Immunohistochemistry of paraffin-embedded Human liver cancer tissue using GSTCD Polyclonal Antibody at dilution of 1:70(x200)



### Western Blotting

**Image 2.** Western blot analysis of K562 cell lysate using GSTCD Polyclonal Antibody at dilution of 1:800