

Datasheet for ABIN7247312

**anti-EEF1D antibody****3** Images[Go to Product page](#)

## Overview

Quantity:	200 µL
Target:	EEF1D
Reactivity:	Human, Mouse, Rat
Host:	Rabbit
Clonality:	Polyclonal
Conjugate:	This EEF1D antibody is un-conjugated
Application:	Western Blotting (WB), ELISA, Immunohistochemistry (IHC)

## Product Details

Immunogen:	Fusion protein of human EEF1D
Isotype:	IgG
Characteristics:	Polyclonal Antibody
Purification:	Antigen affinity purification

## Target Details

Target:	EEF1D
Alternative Name:	EEF1D ( <a href="#">EEF1D Products</a> )
Background:	EEF1D,also named as EF1D and EF 1 delta,belongs to the EF-1-beta/EF-1-delta family. It is a subunit of the elongation factor-1 complex,which is responsible for the enzymatic delivery of aminoacyl tRNAs to the ribosome. EF-1-beta and EF-1-delta stimulate the exchange of GDP bound to EF-1-alpha to GTP. EEF1D is phosphorylated upon DNA damage,probably by ATM or

## Target Details

	ATR. This antibody is a mouse monoclonal antibody raised against residues near the C terminus of human EEF1D.
Molecular Weight:	Observed_MW: Refer to figures Calculated_MW: 31 kDa
UniProt:	<a href="#">P29692</a>

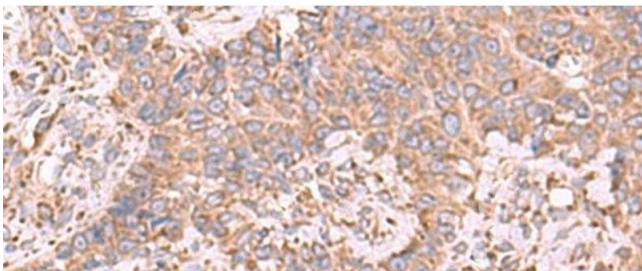
## Application Details

Application Notes:	WB 1:1000-1:5000, IHC 1:50-1:300, ELISA 1:5000-1:10000
Restrictions:	For Research Use only

## Handling

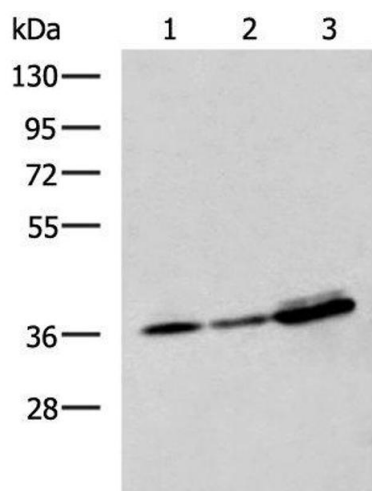
Format:	Liquid
Concentration:	1.14 mg/mL
Buffer:	PBS with 0.05 % Sodium azide and 40 % Glycerol, pH 7.4
Preservative:	Sodium azide
Precaution of Use:	This product contains Sodium azide: a POISONOUS AND HAZARDOUS SUBSTANCE which should be handled by trained staff only.
Storage:	-20 °C
Storage Comment:	Store at -20°C. Avoid freeze / thaw cycles.

## Images



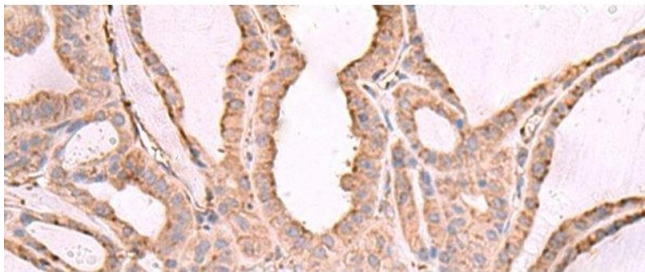
### Immunohistochemistry (Paraffin-embedded Sections)

**Image 1.** Immunohistochemistry of paraffin-embedded Human ovarian cancer tissue using EEF1D Polyclonal Antibody at dilution of 1:65(x200)



### Western Blotting

**Image 2.** Western blot analysis of A549 A172 and HepG2 cell lysates using EEF1D Polyclonal Antibody at dilution of 1:950



### Immunohistochemistry (Paraffin-embedded Sections)

**Image 3.** Immunohistochemistry of paraffin-embedded Human thyroid cancer tissue using EEF1D Polyclonal Antibody at dilution of 1:65(x200)