

Datasheet for ABIN7247354

anti-CSTF3 antibody[Go to Product page](#)**1** Image

Overview

Quantity:	200 µL
Target:	CSTF3
Reactivity:	Human
Host:	Rabbit
Clonality:	Polyclonal
Conjugate:	This CSTF3 antibody is un-conjugated
Application:	Western Blotting (WB), ELISA

Product Details

Immunogen:	Fusion protein of human CSTF3
Isotype:	IgG
Characteristics:	Polyclonal Antibody
Purification:	Antigen affinity purification

Target Details

Target:	CSTF3
Alternative Name:	CSTF3 (CSTF3 Products)
Background:	The protein encoded by this gene is one of three (including CSTF1 and CSTF2) cleavage stimulation factors that combine to form the cleavage stimulation factor complex (CSTF). This complex is involved in the polyadenylation and 3' end cleavage of pre-mRNAs. The encoded protein functions as a homodimer and interacts directly with both CSTF1 and CSTF2 in the

Target Details

	CSTF complex. Alternative splicing results in multiple transcript variants encoding different isoforms.
Molecular Weight:	Observed_MW: Refer to figures Calculated_MW: 83 kDa
UniProt:	Q12996

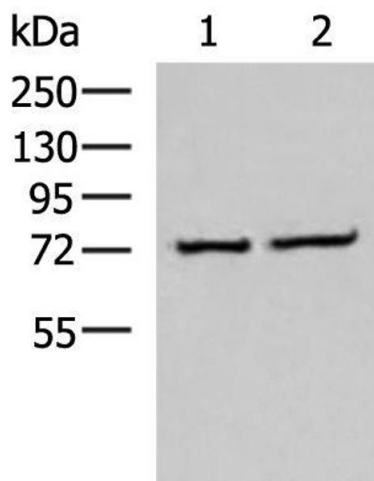
Application Details

Application Notes:	WB 1:500-1:2000, ELISA 1:5000-1:10000
Restrictions:	For Research Use only

Handling

Format:	Liquid
Concentration:	0.84 mg/mL
Buffer:	PBS with 0.05 % Sodium azide and 40 % Glycerol, pH 7.4
Preservative:	Sodium azide
Precaution of Use:	This product contains Sodium azide: a POISONOUS AND HAZARDOUS SUBSTANCE which should be handled by trained staff only.
Storage:	-20 °C
Storage Comment:	Store at -20°C. Avoid freeze / thaw cycles.

Images



Western Blotting

Image 1. Western blot analysis of K562 and Jurkat cell lysates using CSTF3 Polyclonal Antibody at dilution of 1:650