

Datasheet for ABIN7247387
anti-RPL35 antibody



[Go to Product page](#)

2 Images

Overview

Quantity:	200 µL
Target:	RPL35
Reactivity:	Human, Mouse, Rat
Host:	Rabbit
Clonality:	Polyclonal
Conjugate:	This RPL35 antibody is un-conjugated
Application:	ELISA, Immunohistochemistry (IHC)

Product Details

Immunogen:	Fusion protein of human RPL35
Isotype:	IgG
Characteristics:	Polyclonal Antibody
Purification:	Antigen affinity purification

Target Details

Target:	RPL35
Alternative Name:	RPL35 (RPL35 Products)
Background:	Ribosomes, the organelles that catalyze protein synthesis, consist of a small 40S subunit and a large 60S subunit. Together these subunits are composed of 4 RNA species and approximately 80 structurally distinct proteins. This gene encodes a ribosomal protein that is a component of the 60S subunit. The protein belongs to the L29P family of ribosomal proteins. It is located in

Target Details

the cytoplasm. As is typical for genes encoding ribosomal proteins, there are multiple processed pseudogenes of this gene dispersed through the genome. RPL35 (Ribosomal Protein L35) is a Protein Coding gene. Diseases associated with RPL35 include Congenital Muscular Dystrophy Due To Lmna Mutation. Among its related pathways are Viral mRNA Translation and rRNA processing in the nucleus and cytosol. GO annotations related to this gene include poly(A) RNA binding and mRNA binding.

UniProt: [P42766](#)

Application Details

Application Notes: IHC 1:50-1:200, ELISA 1:5000-1:10000

Restrictions: For Research Use only

Handling

Format: Liquid

Concentration: 1.2 mg/mL

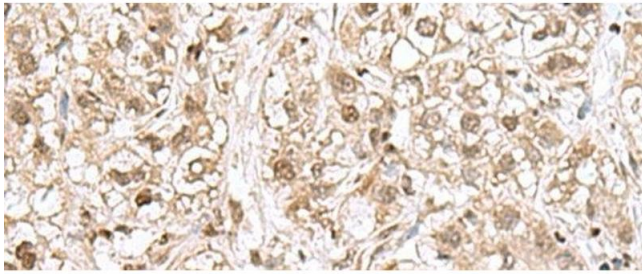
Buffer: PBS with 0.05 % Sodium azide and 40 % Glycerol, pH 7.4

Preservative: Sodium azide

Precaution of Use: This product contains Sodium azide: a POISONOUS AND HAZARDOUS SUBSTANCE which should be handled by trained staff only.

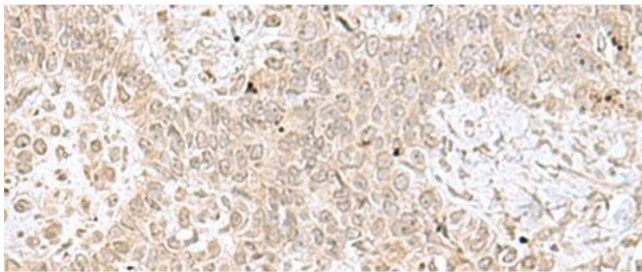
Storage: -20 °C

Storage Comment: Store at -20°C. Avoid freeze / thaw cycles.



Immunohistochemistry (Paraffin-embedded Sections)

Image 1. Immunohistochemistry of paraffin-embedded Human liver cancer tissue using RPL35 Polyclonal Antibody at dilution of 1:70(x200)



Immunohistochemistry (Paraffin-embedded Sections)

Image 2. Immunohistochemistry of paraffin-embedded Human ovarian cancer tissue using RPL35 Polyclonal Antibody at dilution of 1:70(x200)