

Datasheet for ABIN7247426
anti-FAM19A4 antibody



[Go to Product page](#)

2 Images

Overview

Quantity:	200 µL
Target:	FAM19A4
Reactivity:	Human, Mouse, Rat
Host:	Rabbit
Clonality:	Polyclonal
Conjugate:	This FAM19A4 antibody is un-conjugated
Application:	ELISA, Western Blotting (WB), Immunohistochemistry (IHC)

Product Details

Immunogen:	Fusion protein of human FAM19A4
Isotype:	IgG
Characteristics:	Polyclonal Antibody
Purification:	Antigen affinity purification

Target Details

Target:	FAM19A4
Alternative Name:	FAM19A4 (FAM19A4 Products)
Background:	This gene is a member of the TAFA family which is composed of five highly homologous genes that encode small secreted proteins. These proteins contain conserved cysteine residues at fixed positions, and are distantly related to MIP-1alpha, a member of the CC-chemokine family. The TAFA proteins are predominantly expressed in specific regions of the brain, and are

Target Details

postulated to function as brain-specific chemokines or neurokinines, that act as regulators of immune and nervous cells. Alternatively spliced transcript variants have been observed for this gene.

Molecular Weight: Observed_MW: Refer to figures
Calculated_MW: 16 kDa

UniProt: [Q96LR4](#)

Application Details

Application Notes: WB 1:500-1:2000, IHC 1:50-1:200, ELISA 1:5000-1:10000

Restrictions: For Research Use only

Handling

Format: Liquid

Concentration: 0.96 mg/mL

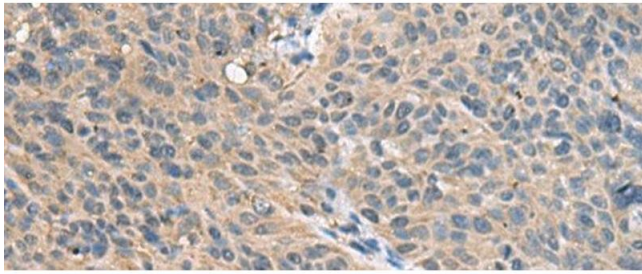
Buffer: PBS with 0.05 % Sodium azide and 40 % Glycerol, pH 7.4

Preservative: Sodium azide

Precaution of Use: This product contains Sodium azide: a POISONOUS AND HAZARDOUS SUBSTANCE which should be handled by trained staff only.

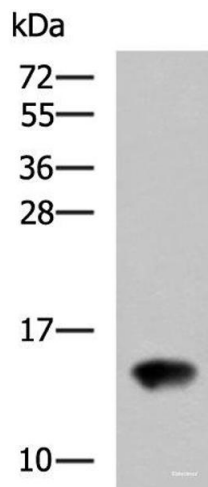
Storage: -20 °C

Storage Comment: Store at -20°C. Avoid freeze / thaw cycles.



Immunohistochemistry (Paraffin-embedded Sections)

Image 1. Immunohistochemistry of paraffin-embedded Human cervical cancer tissue using FAM19A4 Polyclonal Antibody at dilution of 1:55(x200)



Western Blotting

Image 2. Western blot analysis of Rat kidney tissue lysate using FAM19A4 Polyclonal Antibody at dilution of 1:650