

Datasheet for ABIN7247453

anti-RPS14 antibody

3 Images

[Go to Product page](#)

Overview

Quantity:	200 µL
Target:	RPS14
Reactivity:	Human, Mouse, Rat
Host:	Rabbit
Clonality:	Polyclonal
Conjugate:	This RPS14 antibody is un-conjugated
Application:	Western Blotting (WB), ELISA, Immunohistochemistry (IHC)

Product Details

Immunogen:	Fusion protein of human RPS14
Isotype:	IgG
Characteristics:	Polyclonal Antibody
Purification:	Antigen affinity purification

Target Details

Target:	RPS14
Alternative Name:	RPS14 (RPS14 Products)
Background:	Ribosomes, the organelles that catalyze protein synthesis, consist of a small 40S subunit and a large 60S subunit. Together these subunits are composed of 4 RNA species and approximately 80 structurally distinct proteins. This gene encodes a ribosomal protein that is a component of the 40S subunit. The protein belongs to the S11P family of ribosomal proteins. It is located in

Target Details

the cytoplasm. Transcript variants utilizing alternative transcription initiation sites have been described in the literature. As is typical for genes encoding ribosomal proteins, there are multiple processed pseudogenes of this gene dispersed through the genome. In Chinese hamster ovary cells, mutations in this gene can lead to resistance to emetine, a protein synthesis inhibitor. Multiple alternatively spliced transcript variants encoding the same protein have been found for this gene.

Molecular Weight:	Observed_MW: Refer to figures Calculated_MW: 16 kDa
-------------------	--

UniProt:	P62263
----------	------------------------

Pathways:	Ribonucleoprotein Complex Subunit Organization , Ribosome Assembly
-----------	--

Application Details

Application Notes:	WB 1:1000-1:5000, IHC 1:50-1:200, ELISA 1:5000-1:10000
--------------------	--

Restrictions:	For Research Use only
---------------	-----------------------

Handling

Format:	Liquid
---------	--------

Concentration:	0.84 mg/mL
----------------	------------

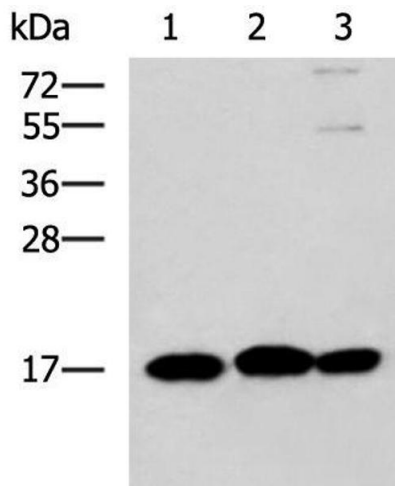
Buffer:	PBS with 0.05 % Sodium azide and 40 % Glycerol, pH 7.4
---------	--

Preservative:	Sodium azide
---------------	--------------

Precaution of Use:	This product contains Sodium azide: a POISONOUS AND HAZARDOUS SUBSTANCE which should be handled by trained staff only.
--------------------	--

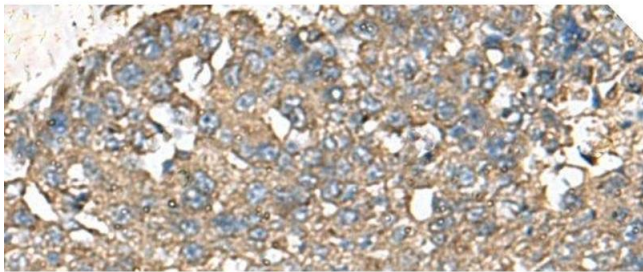
Storage:	-20 °C
----------	--------

Storage Comment:	Store at -20°C. Avoid freeze / thaw cycles.
------------------	---



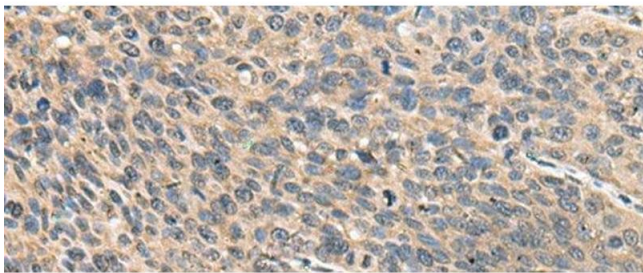
Western Blotting

Image 1. Western blot analysis of 231 HL60 and Jurkat cell lysates using RPS14 Polyclonal Antibody at dilution of 1:700



Immunohistochemistry (Paraffin-embedded Sections)

Image 2. Immunohistochemistry of paraffin-embedded Human liver cancer tissue using RPS14 Polyclonal Antibody at dilution of 1:50(x200)



Immunohistochemistry (Paraffin-embedded Sections)

Image 3. Immunohistochemistry of paraffin-embedded Human cervical cancer tissue using RPS14 Polyclonal Antibody at dilution of 1:50(x200)