



Datasheet for ABIN7247459 anti-RNASE1 antibody



[Go to Product page](#)

2 Images

Overview

Quantity:	200 µL
Target:	RNASE1
Reactivity:	Human, Mouse, Rat
Host:	Rabbit
Clonality:	Polyclonal
Conjugate:	This RNASE1 antibody is un-conjugated
Application:	Western Blotting (WB), Immunohistochemistry (IHC), ELISA

Product Details

Immunogen:	Fusion protein of human RNASE1
Isotype:	IgG
Characteristics:	Polyclonal Antibody
Purification:	Antigen affinity purification

Target Details

Target:	RNASE1
Alternative Name:	RNASE1 (RNASE1 Products)
Background:	This gene encodes a member of the pancreatic-type of secretory ribonucleases, a subset of the ribonuclease A superfamily. The encoded endonuclease cleaves internal phosphodiester RNA bonds on the 3'-side of pyrimidine bases. It prefers poly(C) as a substrate and hydrolyzes 2',3'-cyclic nucleotides, with a pH optimum near 8.0. The encoded protein is monomeric and more

Target Details

commonly acts to degrade ds-RNA over ss-RNA. Alternative splicing occurs at this locus and four transcript variants encoding the same protein have been identified.

Molecular Weight: Observed_MW: Refer to figures
Calculated_MW: 18 kDa

UniProt: [P07998](#)

Application Details

Application Notes: WB 1:500-1:2000, IHC 1:50-1:100, ELISA 1:5000-1:10000

Restrictions: For Research Use only

Handling

Format: Liquid

Concentration: 0.9 mg/mL

Buffer: PBS with 0.05 % Sodium azide and 40 % Glycerol, pH 7.4

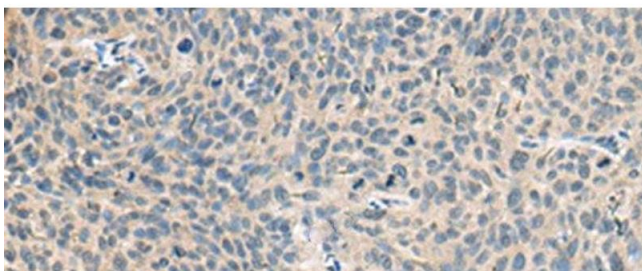
Preservative: Sodium azide

Precaution of Use: This product contains Sodium azide: a POISONOUS AND HAZARDOUS SUBSTANCE which should be handled by trained staff only.

Storage: -20 °C

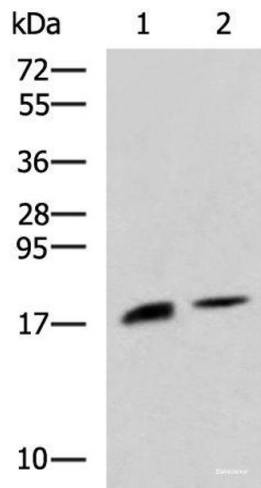
Storage Comment: Store at -20°C. Avoid freeze / thaw cycles.

Images



Immunohistochemistry (Paraffin-embedded Sections)

Image 1. Immunohistochemistry of paraffin-embedded Human cervical cancer tissue using RNASE1 Polyclonal Antibody at dilution of 1:50(x200)



Western Blotting

Image 2. Western blot analysis of Rat pancreas tissue and Mouse pancreas tissue lysates using RNASE1 Polyclonal Antibody at dilution of 1:650