

Datasheet for ABIN7247474

anti-ZG16 antibody**1** Image[Go to Product page](#)

Overview

Quantity:	200 µL
Target:	ZG16
Reactivity:	Human, Mouse
Host:	Rabbit
Clonality:	Polyclonal
Conjugate:	This ZG16 antibody is un-conjugated
Application:	ELISA, Western Blotting (WB)

Product Details

Immunogen:	Fusion protein of human ZG16
Isotype:	IgG
Characteristics:	Polyclonal Antibody
Purification:	Antigen affinity purification

Target Details

Target:	ZG16
Alternative Name:	ZG16 (ZG16 Products)
Background:	May play a role in protein trafficking. May act as a linker molecule between the submembranous matrix on the luminal side of zymogen granule membrane (ZGM) and aggregated secretory proteins during granule formation in the TGN.

Target Details

Molecular Weight:	Observed_MW: Refer to figures Calculated_MW: 18 kDa
UniProt:	O60844

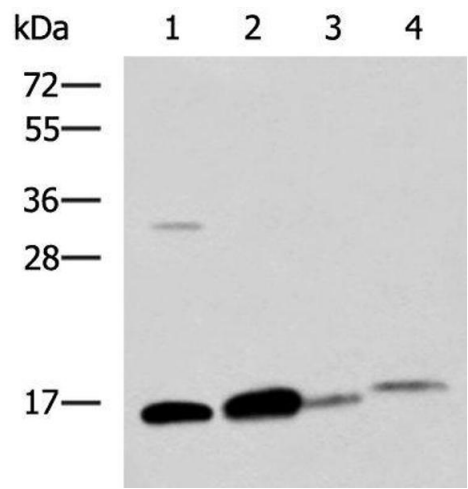
Application Details

Application Notes:	WB 1:500-1:2000, ELISA 1:5000-1:10000
Restrictions:	For Research Use only

Handling

Format:	Liquid
Concentration:	0.96 mg/mL
Buffer:	PBS with 0.05 % Sodium azide and 40 % Glycerol, pH 7.4
Preservative:	Sodium azide
Precaution of Use:	This product contains Sodium azide: a POISONOUS AND HAZARDOUS SUBSTANCE which should be handled by trained staff only.
Storage:	-20 °C
Storage Comment:	Store at -20°C. Avoid freeze / thaw cycles.

Images



Western Blotting

Image 1. Western blot analysis of Human sigmoid tissue Mouse large intestine tissue Mouse small intestines tissue Mouse Pancreas tissue lysates using ZG16 Polyclonal Antibody at dilution of 1:800