

Datasheet for ABIN7247480 **anti-DCTPP1 antibody**

2 Images



[Go to Product page](#)

Overview

Quantity:	200 µL
Target:	DCTPP1
Reactivity:	Human
Host:	Rabbit
Clonality:	Polyclonal
Conjugate:	This DCTPP1 antibody is un-conjugated
Application:	Immunohistochemistry (IHC), ELISA

Product Details

Immunogen:	Fusion protein of human DCTPP1
Isotype:	IgG
Characteristics:	Polyclonal Antibody
Purification:	Antigen affinity purification

Target Details

Target:	DCTPP1
Alternative Name:	DCTPP1 (DCTPP1 Products)
Background:	The protein encoded by this gene is dCTP pyrophosphatase, which converts dCTP to dCMP and inorganic pyrophosphate. The encoded protein also displays weak activity against dTTP and dATP, but none against dGTP. This protein may be responsible for eliminating excess dCTP after DNA synthesis and may prevent overmethylation of CpG islands. Three transcript variants,

Target Details

one protein-coding and the other two non-protein coding, have been found for this gene.

UniProt: [Q9H773](#)

Pathways: [SARS-CoV-2 Protein Interactome](#)

Application Details

Application Notes: IHC 1:100-1:300, ELISA 1:5000-1:10000

Restrictions: For Research Use only

Handling

Format: Liquid

Concentration: 1.5 mg/mL

Buffer: PBS with 0.05 % Sodium azide and 40 % Glycerol, pH 7.4

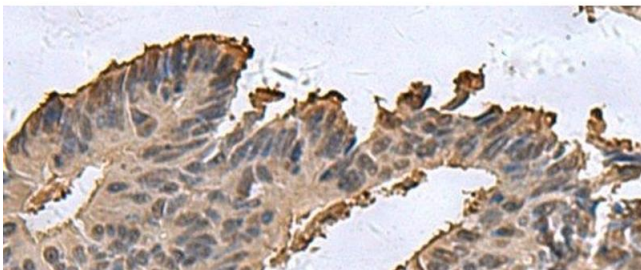
Preservative: Sodium azide

Precaution of Use: This product contains Sodium azide: a POISONOUS AND HAZARDOUS SUBSTANCE which should be handled by trained staff only.

Storage: -20 °C

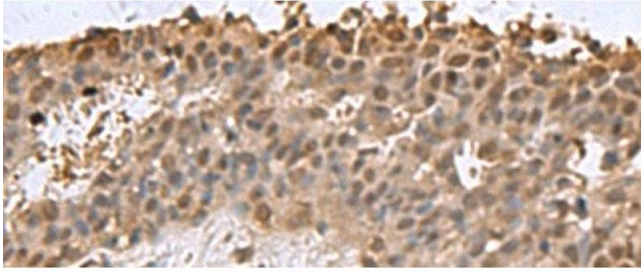
Storage Comment: Store at -20°C. Avoid freeze / thaw cycles.

Images



Immunohistochemistry (Paraffin-embedded Sections)

Image 1. Immunohistochemistry of paraffin-embedded Human colorectal cancer tissue using DCTPP1 Polyclonal Antibody at dilution of 1:85(x200)



Immunohistochemistry (Paraffin-embedded Sections)

Image 2. Immunohistochemistry of paraffin-embedded Human breast cancer tissue using DCTPP1 Polyclonal Antibody at dilution of 1:85(x200)