



[Go to Product page](#)

Datasheet for ABIN7247483

anti-Pallidin antibody

2 Images

Overview

Quantity:	200 µL
Target:	Pallidin (PLDN)
Reactivity:	Human, Mouse, Rat
Host:	Rabbit
Clonality:	Polyclonal
Conjugate:	This Pallidin antibody is un-conjugated
Application:	Western Blotting (WB), ELISA, Immunohistochemistry (IHC)

Product Details

Immunogen:	Fusion protein of human BLOC1S6
Isotype:	IgG
Characteristics:	Polyclonal Antibody
Purification:	Antigen affinity purification

Target Details

Target:	Pallidin (PLDN)
Alternative Name:	BLOC1S6 (PLDN Products)
Background:	The protein encoded by this gene may play a role in intracellular vesicle trafficking. It interacts with Syntaxin 13 which mediates intracellular membrane fusion. Mutations in this gene cause symptoms associated with Hermansky-Pudlak syndrome-9. Alternative splicing results in multiple transcript variants. A pseudogene related to this gene is located on the X

Target Details

chromosome.

Molecular Weight: Observed_MW: Refer to figures
Calculated_MW: 20 kDa

UniProt: [Q9UL45](#)

Pathways: [Synaptic Vesicle Exocytosis](#)

Application Details

Application Notes: WB 1:1000-1:5000, IHC 1:100-1:300, ELISA 1:5000-1:10000

Restrictions: For Research Use only

Handling

Format: Liquid

Concentration: 1.68 mg/mL

Buffer: PBS with 0.05 % Sodium azide and 40 % Glycerol, pH 7.4

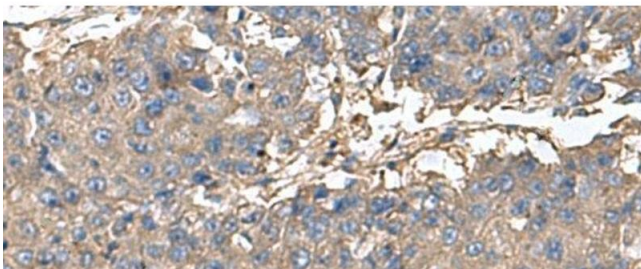
Preservative: Sodium azide

Precaution of Use: This product contains Sodium azide: a POISONOUS AND HAZARDOUS SUBSTANCE which should be handled by trained staff only.

Storage: -20 °C

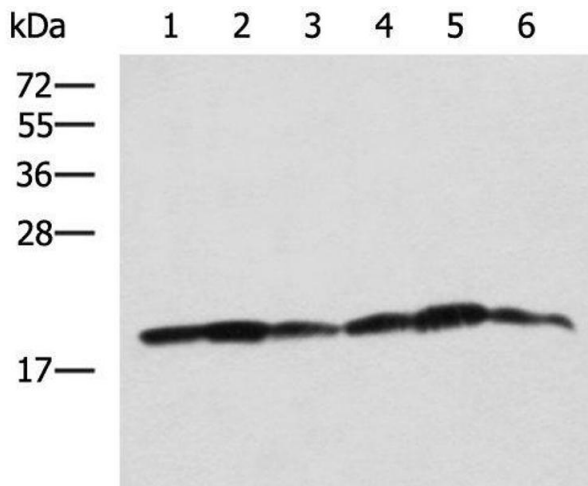
Storage Comment: Store at -20°C. Avoid freeze / thaw cycles.

Images



Immunohistochemistry (Paraffin-embedded Sections)

Image 1. Immunohistochemistry of paraffin-embedded Human liver cancer tissue using BLOC1S6 Polyclonal Antibody at dilution of 1:95(x200)



Western Blotting

Image 2. Western blot analysis of 293T K562 and HepG2 cell lysates using BLOC1S6 Polyclonal Antibody at dilution of 1:650