

Datasheet for ABIN7247498

**anti-RCL antibody****3** Images[Go to Product page](#)

## Overview

Quantity:	200 µL
Target:	RCL (C6orf108)
Reactivity:	Human
Host:	Rabbit
Clonality:	Polyclonal
Conjugate:	This RCL antibody is un-conjugated
Application:	Western Blotting (WB), ELISA, Immunohistochemistry (IHC)

## Product Details

Immunogen:	Fusion protein of human DNPH1
Isotype:	IgG
Characteristics:	Polyclonal Antibody
Purification:	Antigen affinity purification

## Target Details

Target:	RCL (C6orf108)
Alternative Name:	DNPH1 ( <a href="#">C6orf108 Products</a> )
Background:	This gene was identified on the basis of its stimulation by c-Myc protein. The latter is a transcription factor that participates in the regulation of cell proliferation, differentiation, and apoptosis. The exact function of this gene is not known but studies in rat suggest a role in cellular proliferation and c-Myc-mediated transformation. Two alternative transcripts encoding

## Target Details

different proteins have been described.

Molecular Weight: Observed\_MW: Refer to figures  
Calculated\_MW: 19 kDa

UniProt: [O43598](#)

## Application Details

Application Notes: WB 1:500-1:2000, IHC 1:50-1:200, ELISA 1:5000-1:10000

Restrictions: For Research Use only

## Handling

Format: Liquid

Concentration: 1.02 mg/mL

Buffer: PBS with 0.05 % Sodium azide and 40 % Glycerol, pH 7.4

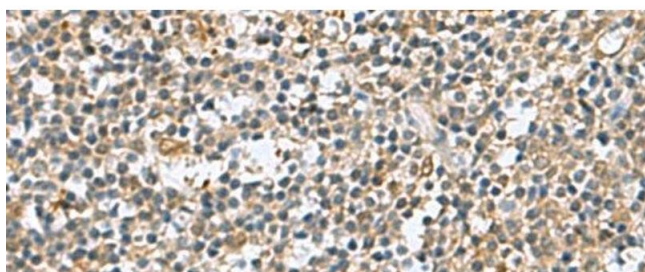
Preservative: Sodium azide

Precaution of Use: This product contains Sodium azide: a POISONOUS AND HAZARDOUS SUBSTANCE which should be handled by trained staff only.

Storage: -20 °C

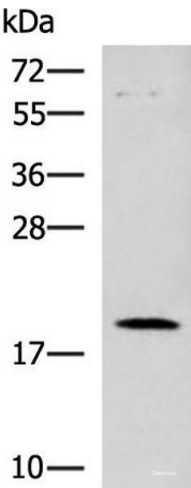
Storage Comment: Store at -20°C. Avoid freeze / thaw cycles.

## Images



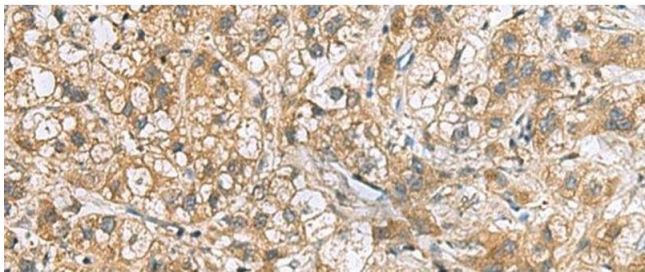
### Immunohistochemistry (Paraffin-embedded Sections)

**Image 1.** Immunohistochemistry of paraffin-embedded Human tonsil tissue using DNPH1 Polyclonal Antibody at dilution of 1:60(x200)



#### Western Blotting

**Image 2.** Western blot analysis of Human heart tissue lysate using DNPH1 Polyclonal Antibody at dilution of 1:800



#### Immunohistochemistry (Paraffin-embedded Sections)

**Image 3.** Immunohistochemistry of paraffin-embedded Human liver cancer tissue using DNPH1 Polyclonal Antibody at dilution of 1:60(x200)