

Datasheet for ABIN7247525

anti-HPCAL1 antibody

3 Images

[Go to Product page](#)

Overview

Quantity:	200 µL
Target:	HPCAL1
Reactivity:	Human, Mouse, Rat
Host:	Rabbit
Clonality:	Polyclonal
Conjugate:	This HPCAL1 antibody is un-conjugated
Application:	Western Blotting (WB), ELISA, Immunohistochemistry (IHC)

Product Details

Immunogen:	Fusion protein of human HPCAL1
Isotype:	IgG
Characteristics:	Polyclonal Antibody
Purification:	Antigen affinity purification

Target Details

Target:	HPCAL1
Alternative Name:	HPCAL1 (HPCAL1 Products)
Background:	The protein encoded by this gene is a member of neuron-specific calcium-binding proteins family found in the retina and brain. It is highly similar to human hippocalcin protein and nearly identical to the rat and mouse hippocalcin like-1 proteins. It may be involved in the calcium-dependent regulation of rhodopsin phosphorylation and may be of relevance for neuronal

Target Details

signalling in the central nervous system. Several alternatively spliced transcript variants encoding the same protein have been found for this gene.

Molecular Weight: Observed_MW: Refer to figures
Calculated_MW: 22 kDa

UniProt: [P37235](#)

Application Details

Application Notes: WB 1:1000-1:5000, IHC 1:50-1:200, ELISA 1:5000-1:10000

Restrictions: For Research Use only

Handling

Format: Liquid

Concentration: 1.2 mg/mL

Buffer: PBS with 0.05 % Sodium azide and 40 % Glycerol, pH 7.4

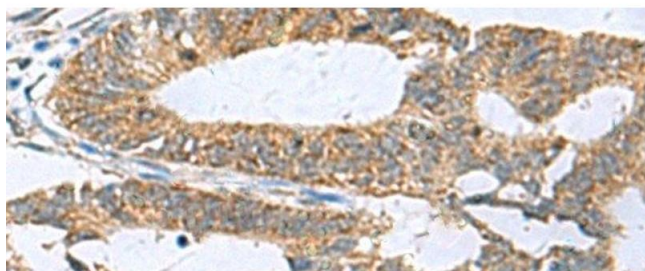
Preservative: Sodium azide

Precaution of Use: This product contains Sodium azide: a POISONOUS AND HAZARDOUS SUBSTANCE which should be handled by trained staff only.

Storage: -20 °C

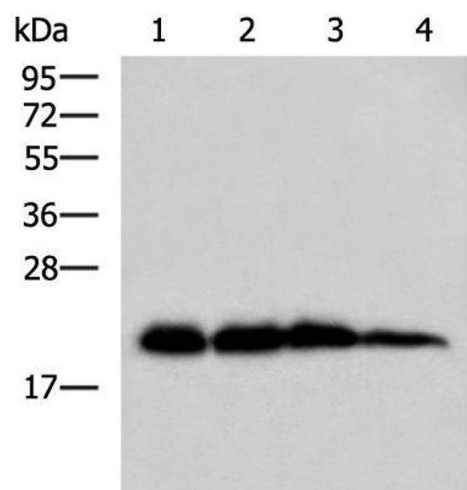
Storage Comment: Store at -20°C. Avoid freeze / thaw cycles.

Images



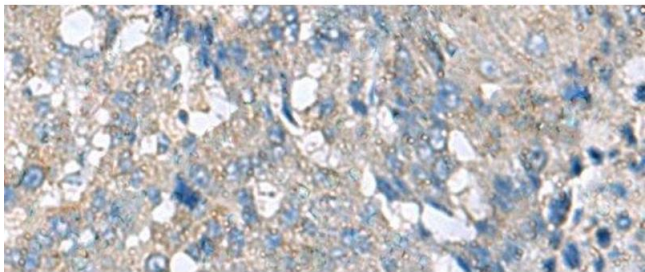
Immunohistochemistry (Paraffin-embedded Sections)

Image 1. Immunohistochemistry of paraffin-embedded Human colorectal cancer tissue using HPCAL1 Polyclonal Antibody at dilution of 1:70(x200)



Western Blotting

Image 2. Western blot analysis of Rat brain tissue Hela HepG2 and A172 cell lysates using HPCAL1 Polyclonal Antibody at dilution of 1:1000



Immunohistochemistry (Paraffin-embedded Sections)

Image 3. Immunohistochemistry of paraffin-embedded Human liver cancer tissue using HPCAL1 Polyclonal Antibody at dilution of 1:70(x200)