

Datasheet for ABIN7247528

anti-CSRP2 antibody

3 Images

[Go to Product page](#)

Overview

Quantity:	200 µL
Target:	CSRP2
Reactivity:	Human, Mouse, Rat
Host:	Rabbit
Clonality:	Polyclonal
Conjugate:	This CSRP2 antibody is un-conjugated
Application:	Western Blotting (WB), ELISA, Immunohistochemistry (IHC)

Product Details

Immunogen:	Fusion protein of human CSRP2
Isotype:	IgG
Characteristics:	Polyclonal Antibody
Purification:	Antigen affinity purification

Target Details

Target:	CSRP2
Alternative Name:	CSRP2 (CSRP2 Products)
Background:	CSRP2 is a member of the CSRP family of genes, encoding a group of LIM domain proteins, which may be involved in regulatory processes important for development and cellular differentiation. CRP2 contains two copies of the cysteine-rich amino acid sequence motif (LIM) with putative zinc-binding activity, and may be involved in regulating ordered cell growth. Other

Target Details

genes in the family include CSRP1 and CSRP3. Alternative splicing results in multiple transcript variants.

Molecular Weight: Observed_MW: Refer to figures
Calculated_MW: 21 kDa

UniProt: [Q16527](#)

Application Details

Application Notes: WB 1:1000-1:5000, IHC 1:50-1:200, ELISA 1:5000-1:10000

Restrictions: For Research Use only

Handling

Format: Liquid

Concentration: 1.08 mg/mL

Buffer: PBS with 0.05 % Sodium azide and 40 % Glycerol, pH 7.4

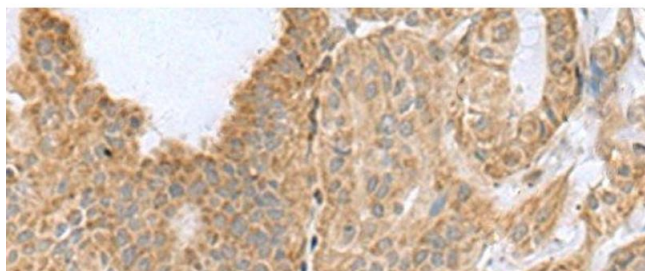
Preservative: Sodium azide

Precaution of Use: This product contains Sodium azide: a POISONOUS AND HAZARDOUS SUBSTANCE which should be handled by trained staff only.

Storage: -20 °C

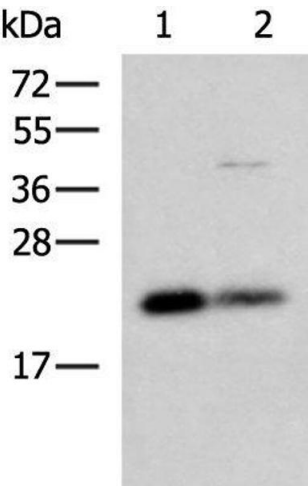
Storage Comment: Store at -20°C. Avoid freeze / thaw cycles.

Images



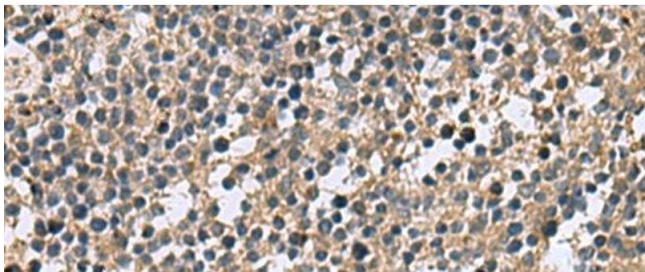
Immunohistochemistry (Paraffin-embedded Sections)

Image 1. Immunohistochemistry of paraffin-embedded Human thyroid cancer tissue using CSRP2 Polyclonal Antibody at dilution of 1:60(x200)



Western Blotting

Image 2. Western blot analysis of HepG2 and A549 cell lysates using CSRP2 Polyclonal Antibody at dilution of 1:900



Immunohistochemistry (Paraffin-embedded Sections)

Image 3. Immunohistochemistry of paraffin-embedded Human tonsil tissue using CSRP2 Polyclonal Antibody at dilution of 1:60(x200)