

Datasheet for ABIN7247534  
**anti-MARCKSL1 antibody**

## 2 Images

[Go to Product page](#)

## Overview

Quantity:	200 µL
Target:	MARCKSL1
Reactivity:	Human, Mouse, Rat
Host:	Rabbit
Clonality:	Polyclonal
Conjugate:	This MARCKSL1 antibody is un-conjugated
Application:	Western Blotting (WB), ELISA, Immunohistochemistry (IHC)

## Product Details

Immunogen:	Fusion protein of human MARCKSL1
Isotype:	IgG
Characteristics:	Polyclonal Antibody
Purification:	Antigen affinity purification

## Target Details

Target:	MARCKSL1
Alternative Name:	MARCKSL1 ( <a href="#">MARCKSL1 Products</a> )
Background:	<p>This gene encodes a member of the myristoylated alanine-rich C-kinase substrate (MARCKS) family. Members of this family play a role in cytoskeletal regulation, protein kinase C signaling and calmodulin signaling. The encoded protein affects the formation of adherens junction.</p> <p>Alternative splicing results in multiple transcript variants. Pseudogenes of this gene are located</p>

## Target Details

	on the long arm of chromosomes 6 and 10.
Molecular Weight:	Observed_MW: Refer to figures Calculated_MW: 20 kDa
UniProt:	<a href="#">P49006</a>

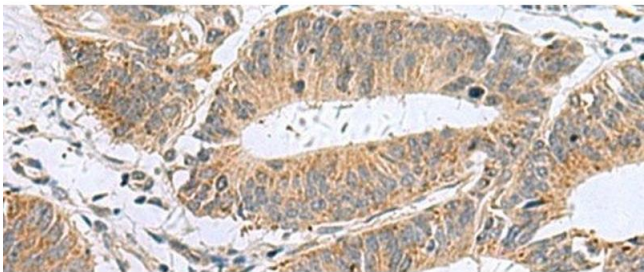
## Application Details

Application Notes:	WB 1:500-1:2000, IHC 1:50-1:100, ELISA 1:5000-1:10000
Restrictions:	For Research Use only

## Handling

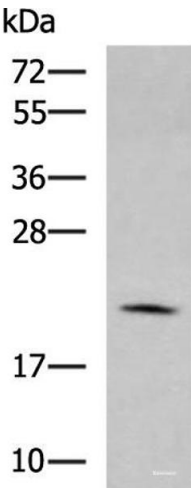
Format:	Liquid
Concentration:	0.9 mg/mL
Buffer:	PBS with 0.05 % Sodium azide and 40 % Glycerol, pH 7.4
Preservative:	Sodium azide
Precaution of Use:	This product contains Sodium azide: a POISONOUS AND HAZARDOUS SUBSTANCE which should be handled by trained staff only.
Storage:	-20 °C
Storage Comment:	Store at -20°C. Avoid freeze / thaw cycles.

## Images



### Immunohistochemistry (Paraffin-embedded Sections)

**Image 1.** Immunohistochemistry of paraffin-embedded Human colorectal cancer tissue using MARCKSL1 Polyclonal Antibody at dilution of 1:50(x200)



Western Blotting

**Image 2.** Western blot analysis of RAW264.7 cell lysate using MARCKSL1 Polyclonal Antibody at dilution of 1:750