

Datasheet for ABIN7247546  
**anti-Phospholipase C beta 2 antibody**[Go to Product page](#)

## 1 Image

## Overview

Quantity:	200 µL
Target:	Phospholipase C beta 2 (PLCb2)
Reactivity:	Human, Mouse, Rat
Host:	Rabbit
Clonality:	Polyclonal
Conjugate:	This Phospholipase C beta 2 antibody is un-conjugated
Application:	Immunohistochemistry (IHC), ELISA

## Product Details

Immunogen:	Fusion protein of human PLCB2
Isotype:	IgG
Characteristics:	Polyclonal Antibody
Purification:	Antigen affinity purification

## Target Details

Target:	Phospholipase C beta 2 (PLCb2)
Alternative Name:	PLCB2 ( <a href="#">PLCb2 Products</a> )
Background:	The protein encoded by this gene is a phosphodiesterase that catalyzes the hydrolysis of phosphatidylinositol 4,5-bisphosphate to the second messengers inositol 1,4,5-trisphosphate (IP3) and diacylglycerol. The encoded protein is activated by G proteins and has been shown to be involved in the type 2 taste receptor signal transduction pathway. In addition, nuclear factor

## Target Details

kappa B can regulate the transcription of this gene, whose protein product is also an important regulator of platelet responses.

UniProt: [Q00722](#)

Pathways: [WNT Signaling](#), [Thyroid Hormone Synthesis](#), [CXCR4-mediated Signaling Events](#), [G-protein mediated Events](#), [Thromboxane A2 Receptor Signaling](#)

## Application Details

Application Notes: IHC 1:50-1:200, ELISA 1:5000-1:10000

Restrictions: For Research Use only

## Handling

Format: Liquid

Concentration: 1.02 mg/mL

Buffer: PBS with 0.05 % Sodium azide and 40 % Glycerol, pH 7.4

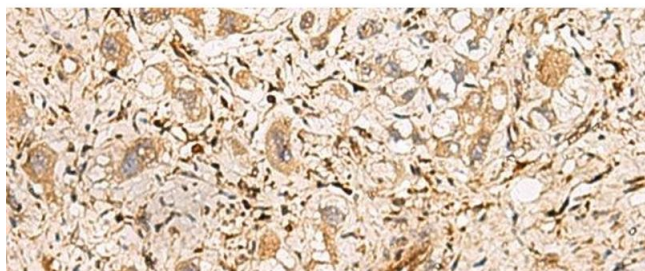
Preservative: Sodium azide

Precaution of Use: This product contains Sodium azide: a POISONOUS AND HAZARDOUS SUBSTANCE which should be handled by trained staff only.

Storage: -20 °C

Storage Comment: Store at -20°C. Avoid freeze / thaw cycles.

## Images



### Immunohistochemistry (Paraffin-embedded Sections)

**Image 1.** Immunohistochemistry of paraffin-embedded Human liver cancer tissue using PLCB2 Polyclonal Antibody at dilution of 1:60(x200)