

Datasheet for ABIN7247570

anti-MRPL40 antibody**3** Images[Go to Product page](#)

Overview

Quantity:	200 µL
Target:	MRPL40
Reactivity:	Human
Host:	Rabbit
Clonality:	Polyclonal
Conjugate:	This MRPL40 antibody is un-conjugated
Application:	Western Blotting (WB), ELISA, Immunohistochemistry (IHC)

Product Details

Immunogen:	Fusion protein of human MRPL40
Isotype:	IgG
Characteristics:	Polyclonal Antibody
Purification:	Antigen affinity purification

Target Details

Target:	MRPL40
Alternative Name:	MRPL40 (MRPL40 Products)
Background:	Mammalian mitochondrial ribosomal proteins are encoded by nuclear genes and help in protein synthesis within the mitochondrion. Mitochondrial ribosomes (mitoribosomes) consist of a small 28S subunit and a large 39S subunit. They have an estimated 75 % protein to rRNA composition compared to prokaryotic ribosomes, where this ratio is reversed. Another

Target Details

difference between mammalian mitoribosomes and prokaryotic ribosomes is that the latter contain a 5S rRNA. Among different species, the proteins comprising the mitoribosome differ greatly in sequence, and sometimes in biochemical properties, which prevents easy recognition by sequence homology. This gene encodes a 39S subunit protein. Deletions in this gene may contribute to the etiology of velo-cardio-facial syndrome and DiGeorge syndrome. MRPL40 (Mitochondrial Ribosomal Protein L40) is a Protein Coding gene. Diseases associated with MRPL40 include Mrpl40-Related Disorder and Velocardiofacial Syndrome. Among its related pathways are Mitochondrial translation and Organelle biogenesis and maintenance. GO annotations related to this gene include poly(A) RNA binding.

Molecular Weight:	Observed_MW: Refer to figures Calculated_MW: 24 kDa
-------------------	--

UniProt:	Q9NQ50
----------	------------------------

Application Details

Application Notes:	WB 1:1000-1:5000, IHC 1:100-1:300, ELISA 1:5000-1:10000
--------------------	---

Restrictions:	For Research Use only
---------------	-----------------------

Handling

Format:	Liquid
---------	--------

Concentration:	1.44 mg/mL
----------------	------------

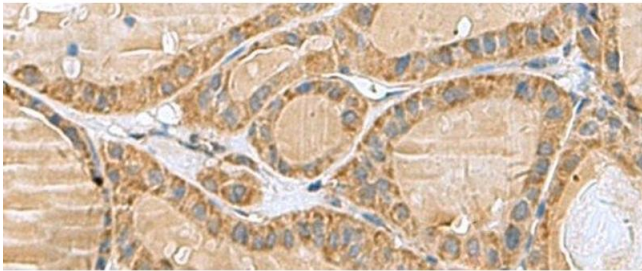
Buffer:	PBS with 0.05 % Sodium azide and 40 % Glycerol, pH 7.4
---------	--

Preservative:	Sodium azide
---------------	--------------

Precaution of Use:	This product contains Sodium azide: a POISONOUS AND HAZARDOUS SUBSTANCE which should be handled by trained staff only.
--------------------	--

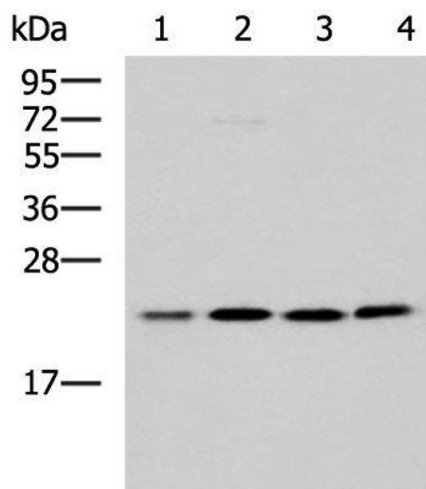
Storage:	-20 °C
----------	--------

Storage Comment:	Store at -20°C. Avoid freeze / thaw cycles.
------------------	---



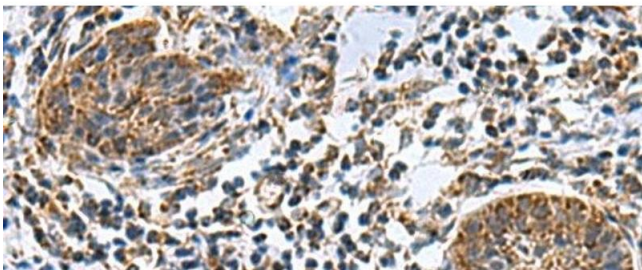
Immunohistochemistry (Paraffin-embedded Sections)

Image 1. Immunohistochemistry of paraffin-embedded Human thyroid cancer tissue using MRPL40 Polyclonal Antibody at dilution of 1:80(x200)



Western Blotting

Image 2. Western blot analysis of K562 A172 Jurkat LOVO cell lysates using MRPL40 Polyclonal Antibody at dilution of 1:1000



Immunohistochemistry (Paraffin-embedded Sections)

Image 3. Immunohistochemistry of paraffin-embedded Human esophagus cancer tissue using MRPL40 Polyclonal Antibody at dilution of 1:80(x200)