

Datasheet for ABIN7247579

anti-RAB38 antibody

3 Images

[Go to Product page](#)

Overview

Quantity:	200 µL
Target:	RAB38
Reactivity:	Human, Mouse
Host:	Rabbit
Clonality:	Polyclonal
Conjugate:	This RAB38 antibody is un-conjugated
Application:	ELISA, Western Blotting (WB), Immunohistochemistry (IHC)

Product Details

Immunogen:	Fusion protein of human RAB38
Isotype:	IgG
Characteristics:	Polyclonal Antibody
Purification:	Antigen affinity purification

Target Details

Target:	RAB38
Alternative Name:	RAB38 (RAB38 Products)
Background:	Ras-related protein Rab-38 is a protein that in humans is encoded by the RAB38 gene. On the basis of human genome sequence data, the RAB38 locus on chromosome 11 is flanked proximally by tyrosinase at 11q14-q21 and distally by EED at 11q14.2-q22.3 and MYO7A at 11q13.5. In melanocytic cells RAB38 gene expression may be regulated by MITF. May be

Target Details

involved in melanosomal transport and docking. Involved in the proper sorting of TYRP1.

Molecular Weight: Observed_MW: Refer to figures
Calculated_MW: 24 kDa

UniProt: [P57729](#)

Application Details

Application Notes: WB 1:500-1:2000, IHC 1:50-1:200, ELISA 1:5000-1:10000

Restrictions: For Research Use only

Handling

Format: Liquid

Concentration: 1.08 mg/mL

Buffer: PBS with 0.05 % Sodium azide and 40 % Glycerol, pH 7.4

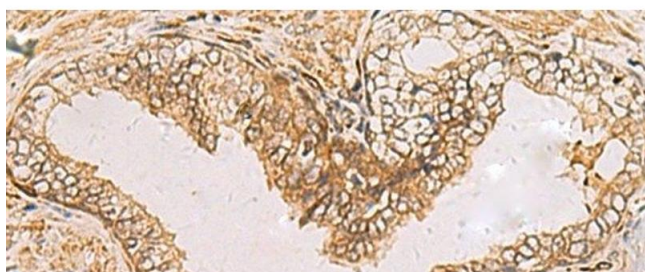
Preservative: Sodium azide

Precaution of Use: This product contains Sodium azide: a POISONOUS AND HAZARDOUS SUBSTANCE which should be handled by trained staff only.

Storage: -20 °C

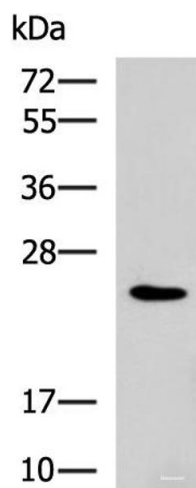
Storage Comment: Store at -20°C. Avoid freeze / thaw cycles.

Images



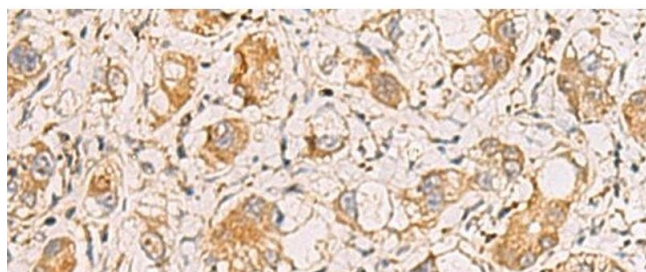
Immunohistochemistry (Paraffin-embedded Sections)

Image 1. Immunohistochemistry of paraffin-embedded Human prostate cancer tissue using RAB38 Polyclonal Antibody at dilution of 1:60(x200)



Western Blotting

Image 2. Western blot analysis of NIH/3T3 cell lysate using RAB38 Polyclonal Antibody at dilution of 1:900



Immunohistochemistry (Paraffin-embedded Sections)

Image 3. Immunohistochemistry of paraffin-embedded Human liver cancer tissue using RAB38 Polyclonal Antibody at dilution of 1:60(x200)