

Datasheet for ABIN7247582

**anti-IGLL1 antibody****1** Image[Go to Product page](#)

## Overview

Quantity:	200 µL
Target:	IGLL1
Reactivity:	Human
Host:	Rabbit
Clonality:	Polyclonal
Conjugate:	This IGLL1 antibody is un-conjugated
Application:	ELISA, Immunohistochemistry (IHC)

## Product Details

Immunogen:	Fusion protein of human IGLL1
Isotype:	IgG
Characteristics:	Polyclonal Antibody
Purification:	Antigen affinity purification

## Target Details

Target:	IGLL1
Alternative Name:	IGLL1 ( <a href="#">IGLL1 Products</a> )
Background:	The preB cell receptor is found on the surface of proB and preB cells, where it is involved in transduction of signals for cellular proliferation, differentiation from the proB cell to the preB cell stage, allelic exclusion at the Ig heavy chain gene locus, and promotion of Ig light chain gene rearrangements. The preB cell receptor is composed of a membrane-bound Ig mu heavy

## Target Details

chain in association with a heterodimeric surrogate light chain. This gene encodes one of the surrogate light chain subunits and is a member of the immunoglobulin gene superfamily. This gene does not undergo rearrangement. Mutations in this gene can result in B cell deficiency and agammaglobulinemia, an autosomal recessive disease in which few or no gamma globulins or antibodies are made. Two transcript variants encoding different isoforms have been found for this gene. IGLL1 (Immunoglobulin Lambda Like Polypeptide 1) is a Protein Coding gene. Diseases associated with IGLL1 include Agammaglobulinemia 2 and Agammaglobulinemia, Non-Bruton Type. Among its related pathways are Cell surface interactions at the vascular wall and Primary immunodeficiency. An important paralog of this gene is IGLL5.

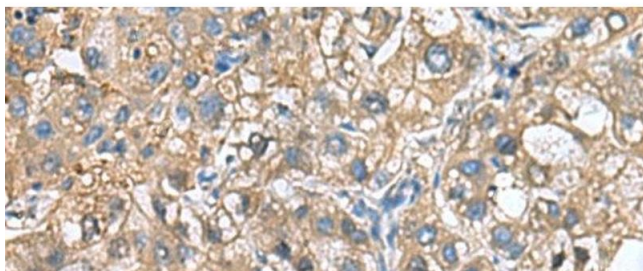
UniProt:	<a href="#">P15814</a>
Pathways:	<a href="#">Regulation of Cell Size</a>

## Application Details

Application Notes:	IHC 1:50-1:200, ELISA 1:5000-1:10000
Restrictions:	For Research Use only

## Handling

Format:	Liquid
Concentration:	1.14 mg/mL
Buffer:	PBS with 0.05 % Sodium azide and 40 % Glycerol, pH 7.4
Preservative:	Sodium azide
Precaution of Use:	This product contains Sodium azide: a POISONOUS AND HAZARDOUS SUBSTANCE which should be handled by trained staff only.
Storage:	-20 °C
Storage Comment:	Store at -20°C. Avoid freeze / thaw cycles.



#### Immunohistochemistry (Paraffin-embedded Sections)

**Image 1.** Immunohistochemistry of paraffin-embedded Human liver cancer tissue using IGLL1 Polyclonal Antibody at dilution of 1:65(x200)