

Datasheet for ABIN7247630

**anti-PSMA6 antibody****2** Images[Go to Product page](#)

## Overview

Quantity:	200 µL
Target:	PSMA6
Reactivity:	Human, Mouse, Rat
Host:	Rabbit
Clonality:	Polyclonal
Application:	Western Blotting (WB), Immunohistochemistry (IHC), ELISA

## Product Details

Immunogen:	Fusion protein of human PSMA6
Isotype:	IgG
Characteristics:	Polyclonal Antibody
Purification:	Antigen affinity purification

## Target Details

Target:	PSMA6
Alternative Name:	PSMA6 ( <a href="#">PSMA6 Products</a> )
Background:	<p>The proteasome is a multicatalytic proteinase complex with a highly ordered ring-shaped 20S core structure. The core structure is composed of 4 rings of 28 non-identical subunits, 2 rings are composed of 7 alpha subunits and 2 rings are composed of 7 beta subunits. Proteasomes are distributed throughout eukaryotic cells at a high concentration and cleave peptides in an ATP/ubiquitin-dependent process in a non-lysosomal pathway. An essential function of a</p>

## Target Details

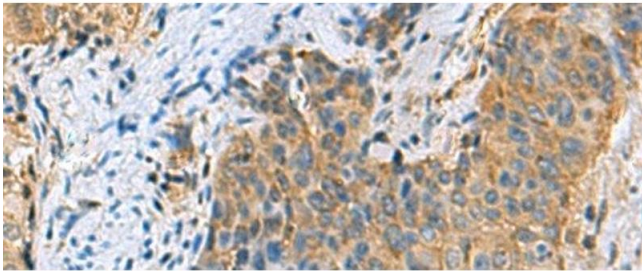
	modified proteasome, the immunoproteasome, is the processing of class I MHC peptides. This gene encodes a member of the peptidase T1A family, that is a 20S core alpha subunit. Multiple transcript variants encoding several different isoforms have been found for this gene. A pseudogene has been identified on the Y chromosome.
Molecular Weight:	Observed_MW: Refer to figures Calculated_MW: 27 kDa
UniProt:	<a href="#">P60900</a>
Pathways:	<a href="#">Mitotic G1-G1/S Phases</a> , <a href="#">DNA Replication</a> , <a href="#">Synthesis of DNA</a>

## Application Details

Application Notes:	WB 1:1000-1:5000, IHC 1:100-1:300, ELISA 1:5000-1:10000
Restrictions:	For Research Use only

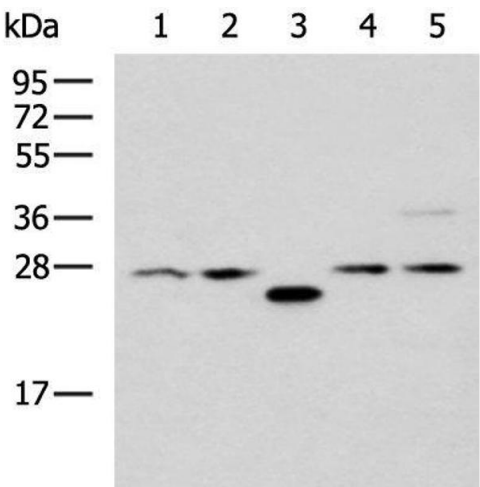
## Handling

Format:	Liquid
Concentration:	1.56 mg/mL
Buffer:	PBS with 0.05 % Sodium azide and 40 % Glycerol, pH 7.4
Preservative:	Sodium azide
Precaution of Use:	This product contains Sodium azide: a POISONOUS AND HAZARDOUS SUBSTANCE which should be handled by trained staff only.
Storage:	-20 °C
Storage Comment:	Store at -20°C. Avoid freeze / thaw cycles.



Immunohistochemistry (Paraffin-embedded Sections)

**Image 1.** Immunohistochemistry of paraffin-embedded Human cervical cancer tissue using PSMA6 Polyclonal Antibody at dilution of 1:90(x200)



Western Blotting

**Image 2.** Western blot analysis of 293T cell lysates using PSMA6 Polyclonal Antibody at dilution of 1:1000